



THUASNE

WINGS
FOR YOUR HEALTH



**ORTHOPAEDICS
2018**

THE GROUP THUASNE IS 170 YEARS OLD

THUASNE has celebrated its 170th anniversary last year, restating loyalty, safety and guarantee as values that you can trust.

In this context, we are happy to introduce the range of medical orthopædic devices designed by the Group and, in particular, our latest innovations addressing spinal and knee pathologies.

More than ever, **THUASNE** is offering patients therapeutic solutions to address all their musculoskeletal problems.

As matter of fact, the body can be subject to shocks on a daily basis and articulations are sometimes put under great stress (sprains or fractures...).

The aging of the locomotor system also exposes articulations to degenerative pathologies, such as osteoarthritis, leading to a reduction of physical mobility.

THUASNE, a dynamic company, is advancing its strategy and developement at a time when the universe of healthcare is in full mutation. More than ever, the Group is ready to accompany health care professionals navigate these changes.

Medical devices too are undergoing a drastic transformation accelerated by the digital age. Today, the patient has become an "actient", eager to participate in her/his own treatment and turning into an actor of her/his own health.

As early as 2016, you, health professionals, have been able to use the **THUASNEcare** application to quickly access accurate information and thus propose the most adapted solution to your patient.

Thus, through medical, innovative and technological solutions fostering compliance, **THUASNE** stands as the pioneer of #medweartech.

THUASNE, in 2018, is again giving wings to your health.



Elizabeth Ducottet
Managing Director



Photo credits:
Studio Caterin
Oram Danneuther
Thierry Maly
Jimmy Delpire
Thuasne Fotoflex
Martin Colombet

CONTENTS

New	05
Back	07
Neck	27
Shoulder	33
Wrist, Thumb & Elbow	37
Knee	47
Ankle	67
Foot	79
Junior range	87
First Aid	90
Measurements	91

These products are regulated medical devices which bear the CE marking.
Only the following products are not medical devices : **Cervi+ pillow** (p. 8, 28) and **Patellar bandage** (p. 58).
Read all instructions before use and seek advice from a qualified healthcare professional.
Update: December 2017 - Manufacturer: THUASNE SAS, 92 LEVALLOIS-PERRET - FRANCE

Argicalm

CLAY PACK



Hot
Pain relief



Cold
Pain relief



Argicalm

REUSABLE THERMIC CLAY PACK

Relieve your pain
with natural clay!

ANATOMICAL ADAPTABILITY

Easily conformable
Ergonomic pack
5 different sizes



EASY OF USE

Instruction printed on the clay pack
Protective sleeve + self-adhering elastic strap:
washable and reusable

PLEASANT TO TOUCH

Technical material PVC: soft and does not hurt
Sleeve with a velvet effect



Hot
Pain relief

back pain, joints stiffness,
muscles stiffness, contractures,
cramps, neck pain, abdominal pain.



Cold
Pain relief

sprains, tendinitis, tooth ache,
bruises, strains, migraines,
eye pain, arthritis.

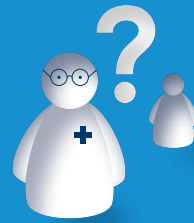
Size	Recommended uses	Dimension (cm)
Size 1 KIDS	Wrist - Elbow - Face	19 x 11
Size 2	Ankle - Elbow - Knee	26 x 13
Size 3	Knee - Back - Abdomen	30 x 20
Size 4	Neck - Shoulder - Back	43 x 17
Size 5	Back - Abdomen - Knee	43 x 17

HOW TO PROVIDE THE RIGHT LUMBAR BELT

Providing a low back pain sufferer with the right belt involves three essential stages:

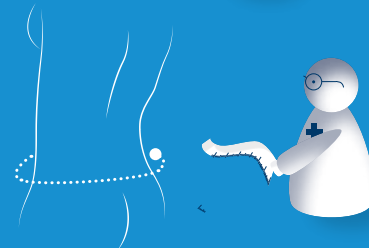
1 CONSULTATION

It is necessary to discuss the nature of the pain and the patient's lifestyle to best understand the patient's needs.



2 MEASUREMENTS

The patient's umbilical perimeter needs to be measured (the waist measurement at the height of the naval), to provide the correct size.

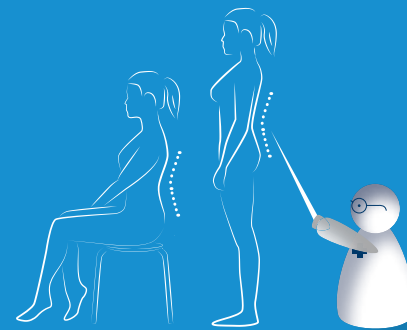


3 FITTING

It is essential to fit the belt in both a seated position and standing up, and to adjust the dorsal stays for the patient to ensure wearing comfort and therefore encourage treatment compliance.



The fitting must be performed by a healthcare professional.



ASSOCIATED ADVICE

Preventing the chronocity of lower back pain is a major challenge

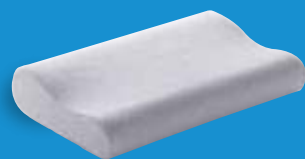
1 RECOMMEND APPLYING HEAT

by proposing **ARGICALM**, the reusable thermo pack:
> Allows to relax the muscles and relieve pain.



2 IMPROVE YOUR PATIENT'S NIGHT COMFORT,

by proposing the **Cervi+ pillow**:
> For a better distribution of the spine's loads in lying position.



3 LIMIT THE VIBRATIONS' IMPACT ON YOUR ACTIVE AND ATHLETIC PATIENTS,

by proposing **Pedipro** insoles and heels:
> For an even dissipation of mechanical constraints on the lumbar spine.



All THUASNE lumbar support belts have 4 dorsal stays made of conformable spring steel: they enable our belts to properly fulfill their role of elastic support.

WHICH LUMBAR BELT FOR WHICH PATIENT?



BACK



Height
21 or 26 cm



Identify the patient's most frequent posture and ask them to try the brace in that position (E.g. a frequently sitting patient will tend to prefer a height of 21 cm).

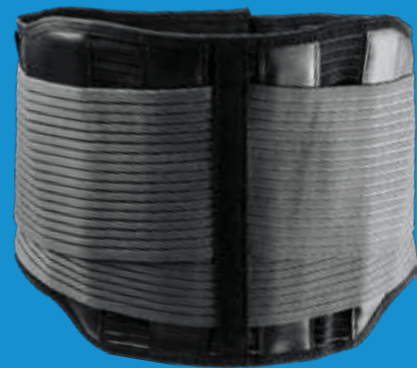
Lumbar belts reduce pain and allow for rapid return to activity

> EFFICACY OF THE **THUASNE Lombacross Activity** belt in subacute low back pain. An open, multicentric, and randomized clinical study.

Calmels P et al. Effectiveness of a Lumbar Belt in Subacute Low Back Pain: An Open, Multicentric, and Randomized Clinical Study. Spine. 2009 ; 34(3) : 215-220.

PROVEN !

- A faster and greater **reduction in pain intensity**.
- Faster, more extensive **functional recovery**.
- **Saving of € 200** on treatment costs².



Randomised STUDY¹

(197 patients - 3 months)

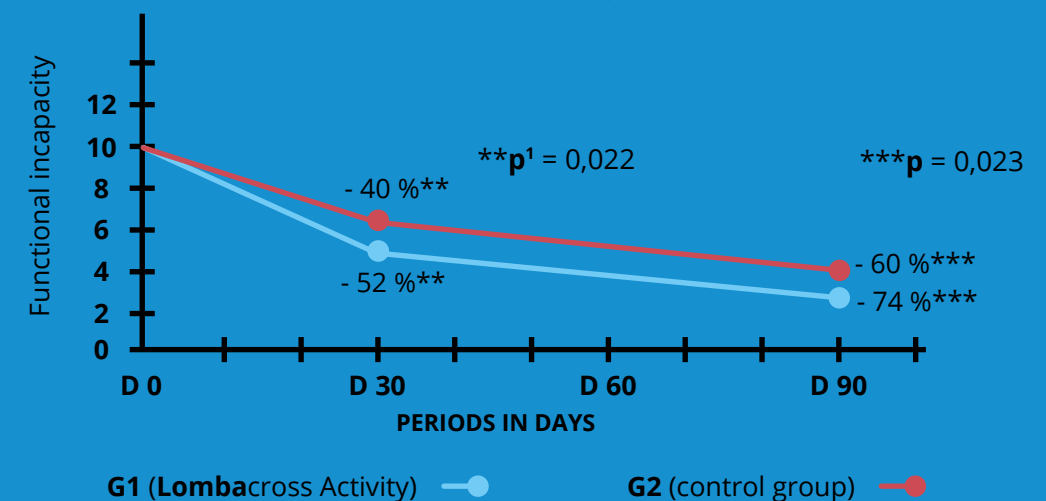
- **GROUP 1 (G1) :**
102 patients with low back pain treated with **Lombacross Activity** + medication.
- **GROUP 2 (G2) :**
95 patients with low back pain taking their usual treatment without a belt.

> EFFECTS OF LUMBAR BELTS ON TRUNK MUSCLES: STUDY OF MUSCLE STRENGTH AFTER 21 DAYS OF USE ON SAFE SUBJECTS³.

LUMBAR BELTS DO NOT HAVE A NEGATIVE EFFECT ON PATIENTS' STRENGTH³

Evolution in EIFEL* score between D0 and D90

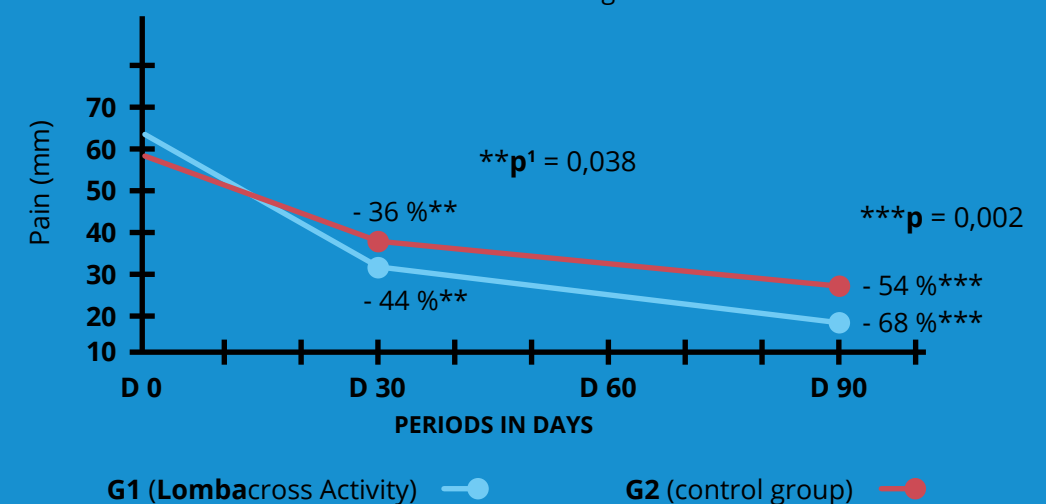
*EIFEL score: Functional Disability Scale for Lower Back Pain Assessment
(French translation of Roland-Morris questionnaire)



Group with belt > Group with usual treatment:
Statistically significant functional improvement from the 1st month for the Group with belt, persisting at D90

Evolution in VAS score** between D0 and D90

*VAS score: Visual Analogue Scale



Group with belt > Group with usual treatment:
Statistically significant reduction in pain from the 1st month for the Group with belt, persisting at D90

1. Calmels P et al. Effectiveness of a Lumbar Belt in Subacute Low Back Pain: An Open, Multicentric, and Randomized Clinical Study. Spine. 2009 ; 34(3) : 215-220.
2. Compared with the estimated cost of treatment in the control group.
3. *Fateme Azadnia, PhD candidate, Esmail Ebrahimi Takamjani, PhD, Mojtaba Kamyab, PhD, Mohammad Parnianpour, PhD, Jacek Cholewicki, PhD, Nader Maroufi, PhD - Spine J. 2016 Dec 14.

1. The minimum significance value for p is 0.05. The lower the p value, the better the significance of the study result.

Special belts for pregnant women help to **reduce** the pain in most **situations of everyday life**

> EFFICIENCY OF **THUASNE LombaMum®** AND **Ortel P** on pelvic girdle pain on pregnant women¹.

PROVEN !

After, on average, 9 weeks of wearing:

- **Decrease in the intensity of overall pain by 20 mm**
- **Decrease in the intensity of sacroiliac pains by 20 mm**
- **Decrease in the number of women reporting pains during walking or prolonged sitting or standing positions**
- **Decrease in the number of women reporting diffused or deep pain**



Randomized STUDY

(46 pregnant women - 9 weeks on average)

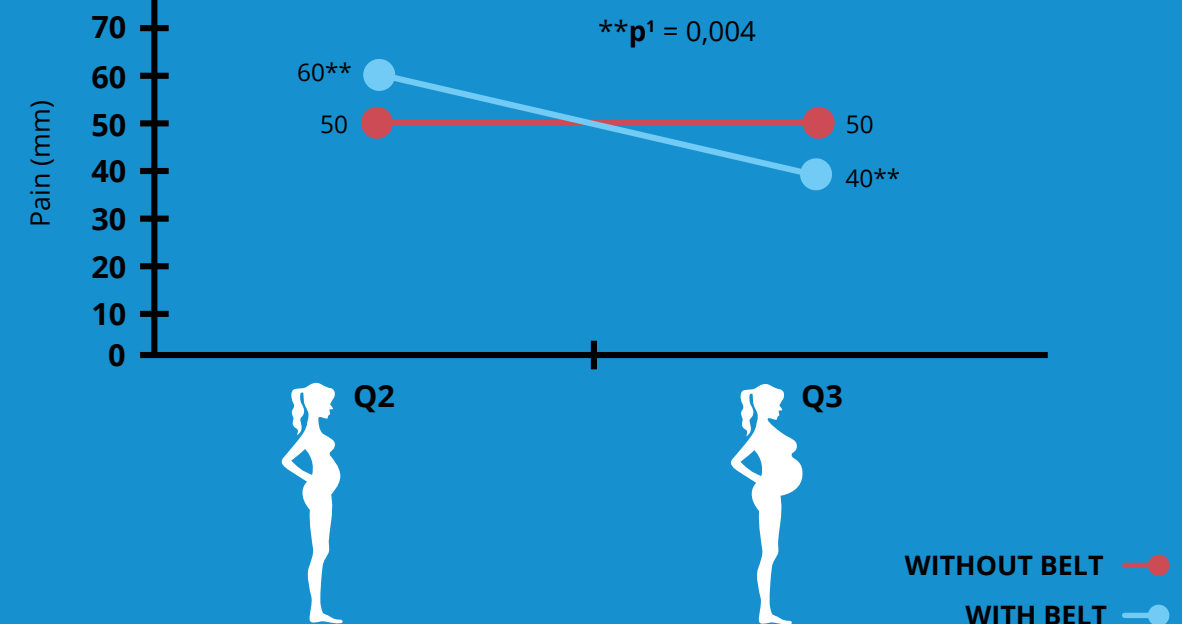
- **GROUP A:**
38 pregnant women suffering from pelvic pains whom have worn the belt. This group was splited in two random groups:
A1 : Pregnant women having worn the **Ortel P**
A2 : Pregnant women having worn the **LombaMum®**
- **GROUP B :**
Pregnant women suffering from pelvic pains whom have not worn any belt



to **reduce** the pain

Evolution of the VAS* score between the 2nd (Q2) and 3rd (Q3) quarter of pregnancy

*VAS score: Visual Analogue Scale



Statistically significant decrease of overall pain over time in the group wearing a "belt"

Evolution of the % of women reporting pain in certain situations of everyday life between the 2nd and 3rd quarter of pregnancy

Symptoms	With belt	Without belt
Pain during gate	- 37 %	1 %
Pain during prolonged standing	- 42 %	- 25 %
Pain during prolonged sitting	- 37 %	- 25 %

Statistically significant decrease in % of women reporting pain in everyday situations

1. Bertuit J. et al. J Clin Nurs. 25 mai 2017. DOI:10.1111/jocn.13888. Pregnancy and pelvic girdle pain: analysis of pelvic belt on pain.



The lumbar spine "Essentials"



LombaTech®

0852 02 (21 cm) - 0851 03 (26 cm)

The lumbar belt that adapts to all body shapes



RECOMMENDED FOR

- Common low back pain in the acute phase affecting the high or low lumbar region, with moderate to intense pain



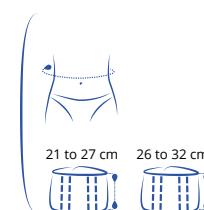
POINTS TO REMEMBER

- Precise targeting of pain** thanks to the additional removable strap
- Can be worn next to the skin all day long** thanks to the Combitex and Coolmax® fabrics
- Optimised fit for all body shapes** thanks to the patented adjustable back
- Available in waist size **160 cm**



TYPICAL PATIENT

- Patient with a heavy build suffering from low back pain
- Women with large hips
- Low back pain with mixed physical activity



- 60 - 75 cm
- 76 - 94 cm
- 95 - 115 cm
- 116 - 140 cm
- 140 - 160 cm

Find out more



Removable double strapping



Combitex fabric

The lumbar spine "Essentials"



LombaStab

0854 01 (21 cm) - 0853 01 (26 cm)

The lumbar belt that adjusts with precision throughout the day



RECOMMENDED FOR

- Common low back pain in acute phase with moderate to intense lumbar pain
- Recurrent low back pain



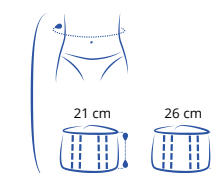
POINTS TO REMEMBER

- Even compression** and **simplified adjustment** thanks to its **easy attachment system** (Quick Lacing System)
- Enhanced stability** thanks to the elastic properties of the fabric
- Constant ease and freedom of movement** thanks to its anatomical design with **curved hips** and **inset abdominal plastron**



TYPICAL PATIENT

- Low back pain sufferer with mixed to significant physical activity, e.g.: mobile or physical professions



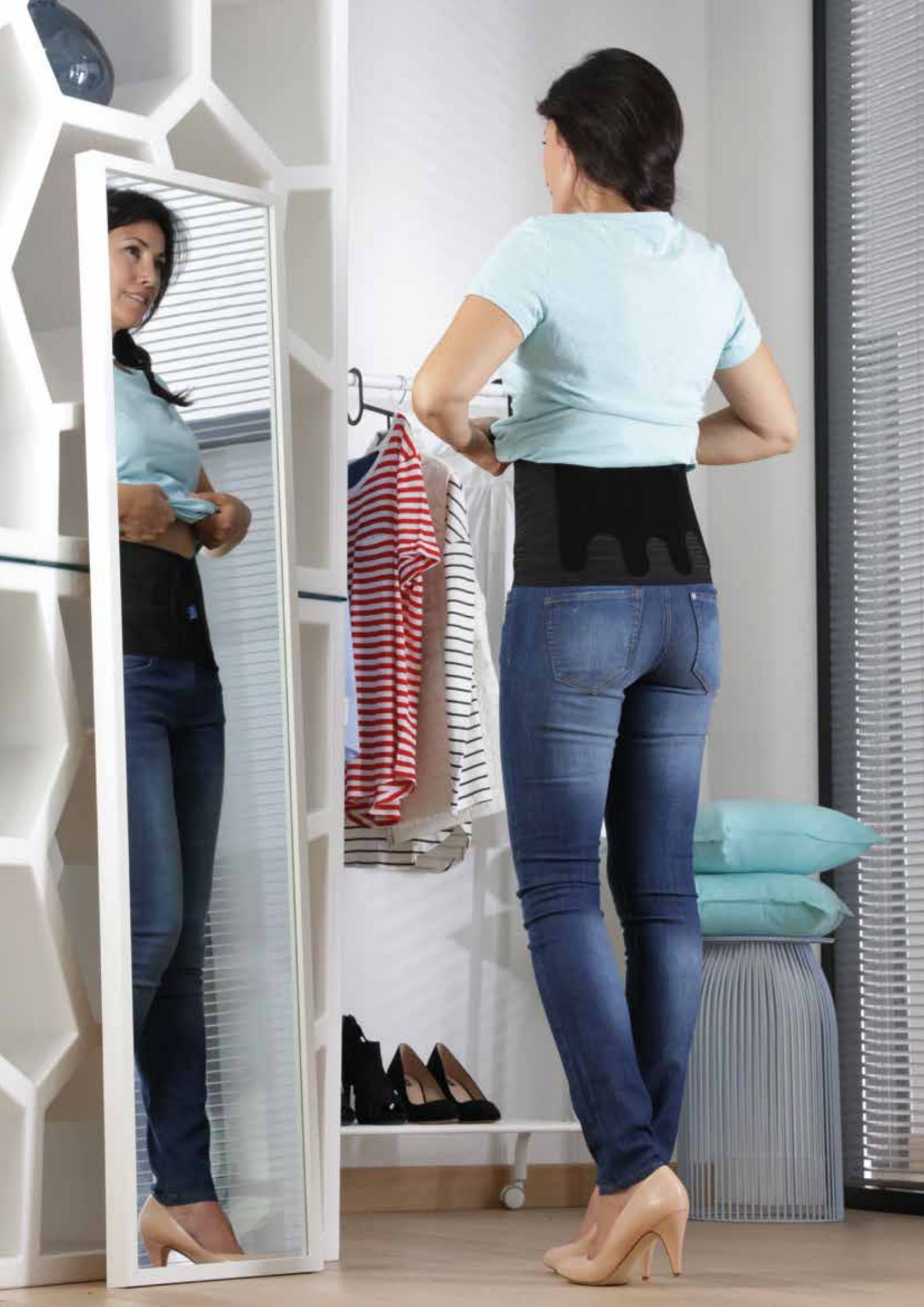
- 75 - 95 cm
- 90 - 110 cm
- 105 - 125 cm
- 120 - 140 cm

Find out more



Easy to adjust





The lumbar spine "Essentials"



LombaSkin

0871 02 (21 cm) - 0870 02 (26 cm)

A discreet, lightweight lumbar belt



RECOMMENDED FOR

- Common low back pain in the acute phase with moderate pain



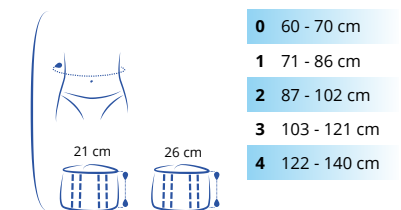
POINTS TO REMEMBER

- **A second skin effect**, thanks to a seamless design
- **Can be worn next to the skin all day long**, thanks to the Combitex fabric



TYPICAL PATIENT

- Low back pain sufferer with moderate physical activity, eg: sedentary office worker



Black



Beige



Combitex fabric



The lumbar spine "Essentials"



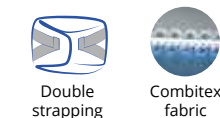
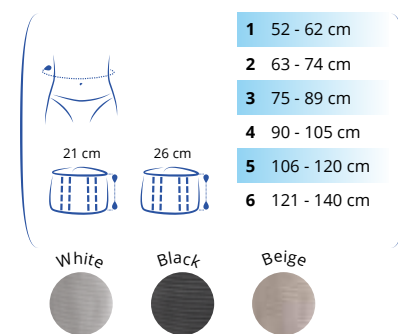
Lombacross Activity

0836 01 (21 cm) - 0835 03 (26 cm)

A lumbar belt offering reinforced support

- RECOMMENDED FOR**
- Common low back pain in the acute phase with intense lumbar pain
- POINTS TO REMEMBER**
- Support adapted to pain**, thanks to the additional reinforced strap
 - Wearer comfort**, thanks to the anatomical cuts to free the hips and ribs
 - Can be worn next to the skin all day long**, thanks to the Combitec fabric

TYPICAL PATIENT
Low back pain and high level of physical activity, for example an order picker



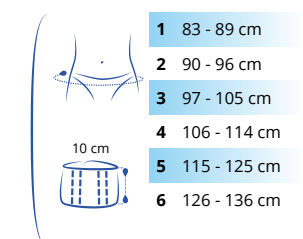
THE "SPECIFICS" FOR FUTURE MOTHERS*



Ortel P

2740 01

- Pelvic belt** for pelvic support in cases of sacro-iliac or symphyseal instability pains
- Extra-strong support** thanks to its elasticated fabric
- Adjustable support** thanks to its additional tightening strap
- Wearer comfort** thanks to the extra-soft terry lining



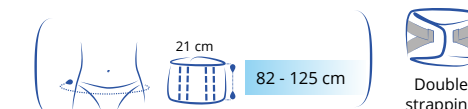
LombaMum®

0805 01



JANUS 2014
DE LA SANTÉ

- Maternity lumbar belt**, for low back, pelvic and sacro-iliac pain in pregnant women
- Adjustable support** thanks to the additional straps
- Size adjustable to stage of pregnancy**, thanks to the 2 abdominal support bands
- Wearer comfort**, thanks to the bamboo fibre lining



* See clinical study p. 12-13

The lumbar spine "Essentials"

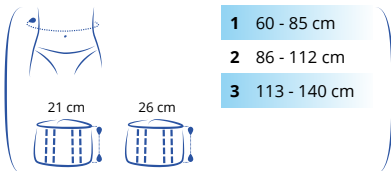


LombaxOriginal

0824 03

The reference belt for occasional use

- RECOMMENDED FOR**
- Treating recurrent conditions during daily activities which out pressure on the lower back
- POINTS TO REMEMBER**
- **High elastic compression and strength** thanks to the Lombax fabric
 - **Easy to put on** thanks to the two part closure
 - **Increased comfort and breathability** thanks to the **3D weave** dorsal plastron
- TYPICAL PATIENT**
- Osteoarthritis patient with risk of low back pain, e.g.: active aged person



The lumbar spine "Alternatives"



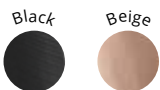
Lombacross

0830 04 - 0830 05

- **Functional muscular simulation** at the rear thanks to its crossed elasticated bands
- **Can be worn next to the skin all day long** thanks to the Combitec fabric

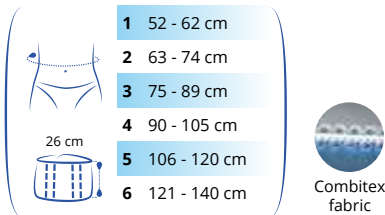
0830 04

- **Accentuated sides and rear heights**



0830 05

- **Anatomical cut** to free up the hips and the ribs
- **Increased dorsal comfort** with its velvet-foam combination



The lumbar spine "Alternatives"

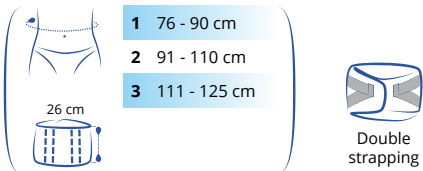


LombaxActivity

0850 02

The belt for professionals exposed to stressful postures

- RECOMMENDED FOR**
- Treating recurrent conditions during professional activities which put pressure on the lumbar region
- POINTS TO REMEMBER**
- **Ideal support for use during physical effort** thanks to its additional strengthened strap
 - **High elastic compression and strength** from the Lombax fabric
 - **Practical to use** in a professional environment thanks to its removable shoulder straps
- TYPICAL PATIENT**
- Labourer, farmer, removals agent



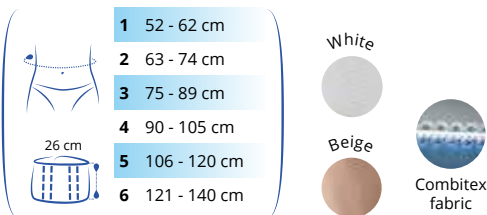
The lumbar spine "Alternatives"



Dynacross

7680 05

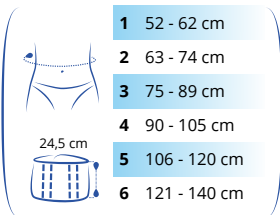
- **Lombar-abdominal support belt**
- **Flexible support** thanks to its flexible posterior reinforcement
- **Functional muscular simulation** at the rear thanks to its crossed elasticated bands
- **Can be worn next to the skin all day long** thanks to the Combitec fabric



Ortelcross

4050 01

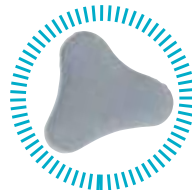
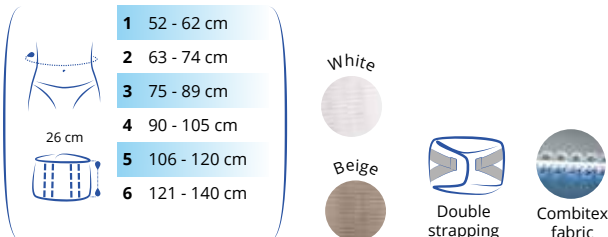
- **Functional lumbar belt**
- **Flexible support** thanks to its flexible posterior reinforcement
- **Functional muscular simulation** at the rear thanks to its crossed elasticated bands
- **Extra comfort** thanks to its aerated elastic fabric



Dynacross activity

7685 01

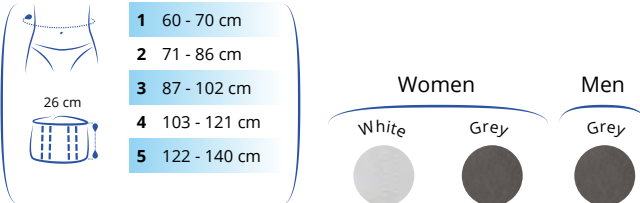
- **Reinforced lombar-abdominal support belt**
- **Flexible support** thanks to its flexible posterior reinforcement
- **Functional muscular simulation** at the rear thanks to its crossed elasticated bands
- **Ideal support for use during physical effort** thanks to its additional strengthened strap
- **Can be worn next to the skin all day long** thanks to the Combitec fabric



Lombapro comfort

0801 01

- **Progressive support** thanks to its silicon double-reinforced dorsal plate
- **Stress-relieving effect** thanks to its incorporated massage pegs
- **Aerated weave** providing two levels of differentiated support
- **Dual hand-loop** system





BELTS

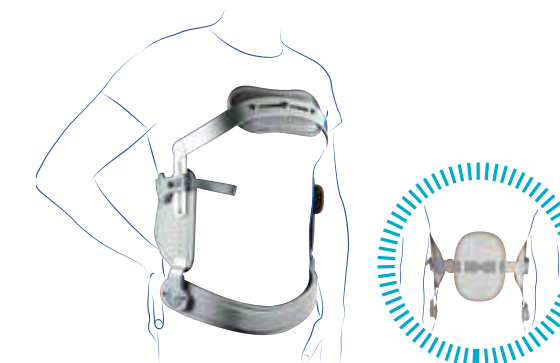
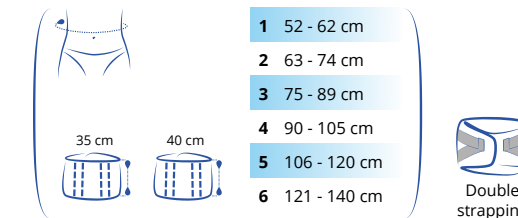
THE DORSAL SPINE "SPECIALS"



Lombax High

0843 03

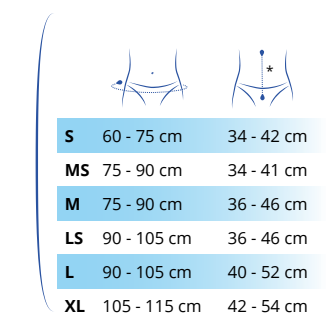
- **Dorsal-lumbar support** thanks to its 35 cm to 40 cm dorsal height
- **Adjustable tightening** thanks to its additional rear-front related straps
- **High elastic compression** thanks to the Lombax fabric
- **Easy to put on** thanks to the two part rear closure



DorsoRigid 35

0890 02

- **Immobilising spinal hyper-extension corset**
- Resting and static posture correction of the spine due to a stabilising and immobilising action, based on three pressure points
- Fast, ergonomic fitting
- Water-resistant



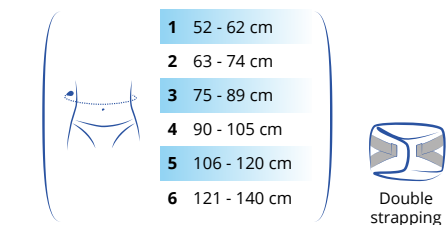
* measured from the proximal side of the corpus sterni to the upper edge of the pubic bone (tuberculum pubicum)



LombaxDorso

0845 02

- **Posture-correcting dorsal-lumbar corset**
- **Effective adjustment to the subject's morphology** thanks to the back support section that adapts to the spinal curve with adjustable height
- Adjustable **tightening** thanks to its additional rear-front related straps
- **High elastic compression** thanks to the Lombax fabric
- **Easy to fit** thanks to the "backpack"-style straps
- **Easy to wear** thanks to the sub-axillary cushioning



OsteoMed acute

T548803

- **Osteoporosis brace to relieve and correct the lumbar/thoracic spine**
- Fits the patient's shape perfectly
- Adjustable back straightener that can be adapted to the patient's lordosis
- Ergonomic hand loop
- Additional adjustable straps that can be cut to size

Single size

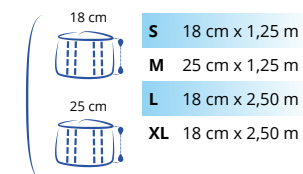
THORACIC AND ABDOMINAL BELTS



Cemen

2800 01

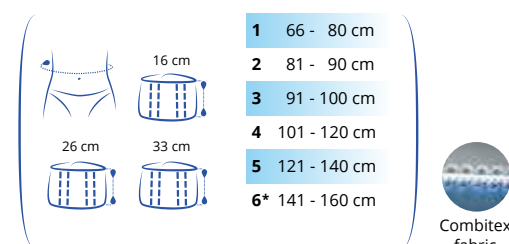
- **Thoracic bandage belt for fractured ribs**
- High support **elastic fabric**
- Velcro closure



Dynabelt

7010 07 (16 cm) - 7010 08 (26 cm) - 7010 09 (33 cm)

- **Thoracic or abdominal support belt**
- **Can be worn next to the skin all day long** thanks to the Combitec fabric
- Removable support reinforcements
- Can be sterilised in an autoclave



* only for the 33 cm belt

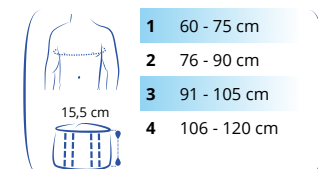


Cemen

2900 01

- **Thoracic belt**
- Resistant elastic fabric for thoracic support

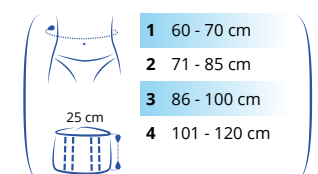
Models: men - women



Stomex

2700 02

- **Abdominal support belt for stoma patients**
- **Front zone in ladder-proof fabric**, allows drains and colostomy bags to be passed through



BELTS OTHER ORTHOSES

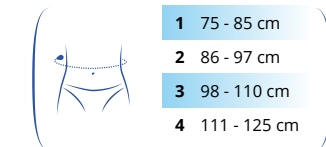


Ortel

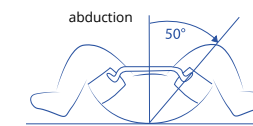
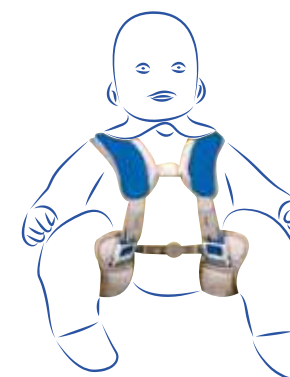
2730 01: **unilateral** (right and left adjustable)

2720 01: **bilatéral**

- **Truss** for reducible inguinal hernia
- **Right/left adjustment** thanks to its unique buckle system
- **Comfort and effectiveness** thanks to its removable and repositionable silicon pads
- **Available in unilateral and bilateral versions**



Hip orthoses



ORDER IN GERMANY

HIP-med

T515501

- **Treatment of hip dysplasia and dislocation** in newborn babies and infants
- Lower limb resting position at between 90° and 100°
- Possibility of continuous adjustment
- Does not disrupt the blood circulation
- Removable washable lining around the neck for better contact
- Leg shells with removable, washable covers
- **Tool-free adjustment** of leg spread

	Thigh shell spread	Thigh circumference
XXS premature babies	11,5 - 14 cm	12 - 16 cm
XS newborn babies	13 - 16 cm	12 - 16 cm
S a few weeks	13 - 18 cm	15 - 18 cm
M a few months	14,5 - 20,5 cm	17 - 22 cm
L several months	20 - 27 cm	20 - 25 cm



ORDER IN GERMANY

HiplocEvo

T540502

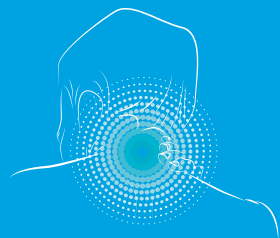
- Reliable prevention of dislocations without impeding day-to-day movements
- **Guiding of hip** due to an integrated splint at the pelvis and knee
- **Possibility of limiting** flexion and extension movements

2 versions: left or right





NECK



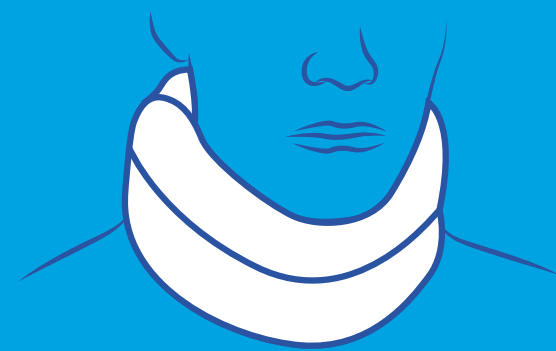
The neck is made up of 7 vertebrae forming the cervical spine. It plays the mechanical role of supporting the head. Crossed by the spinal cord - the body's sensory-motor command centre - it is a highly sensitive zone. The main neck problems are related to injury (sprain, torticollis) or degenerative conditions (arthritis).

GOOD TO KNOW
Don't forget to have the collar tried on to check if it is the correct size

WHICH CERVICAL COLLAR FOR WHICH PATHOLOGY?

	Torticollis	Cervical arthritis	Cervico-brachial neuralgia	Mild sprain	Moderate sprain	Severe sprain	Non-displaced fracture
CERVICAL COLLARS							
Ortel C1 classic							
Ortel C1 anatomic							
Ortel C2 plus							
Ortel C3 classic							
Ortel C3							
Ortel C4 rigid							
Ortel C4 vario							
NEW Eclipse							

ACTION PRINCIPLE
OF THE CERVICAL COLLAR



Cervical collars **immobilise the cervical spine**, limiting flexion, extension and rotation movements. The degree of immobilisation varies depending on the rigidity of the collar.

They also play a **proprioceptive role**, reinforcing sensations from the cervical spine, as well as an **analgesic role** due to their thermal action combined with immobilisation.

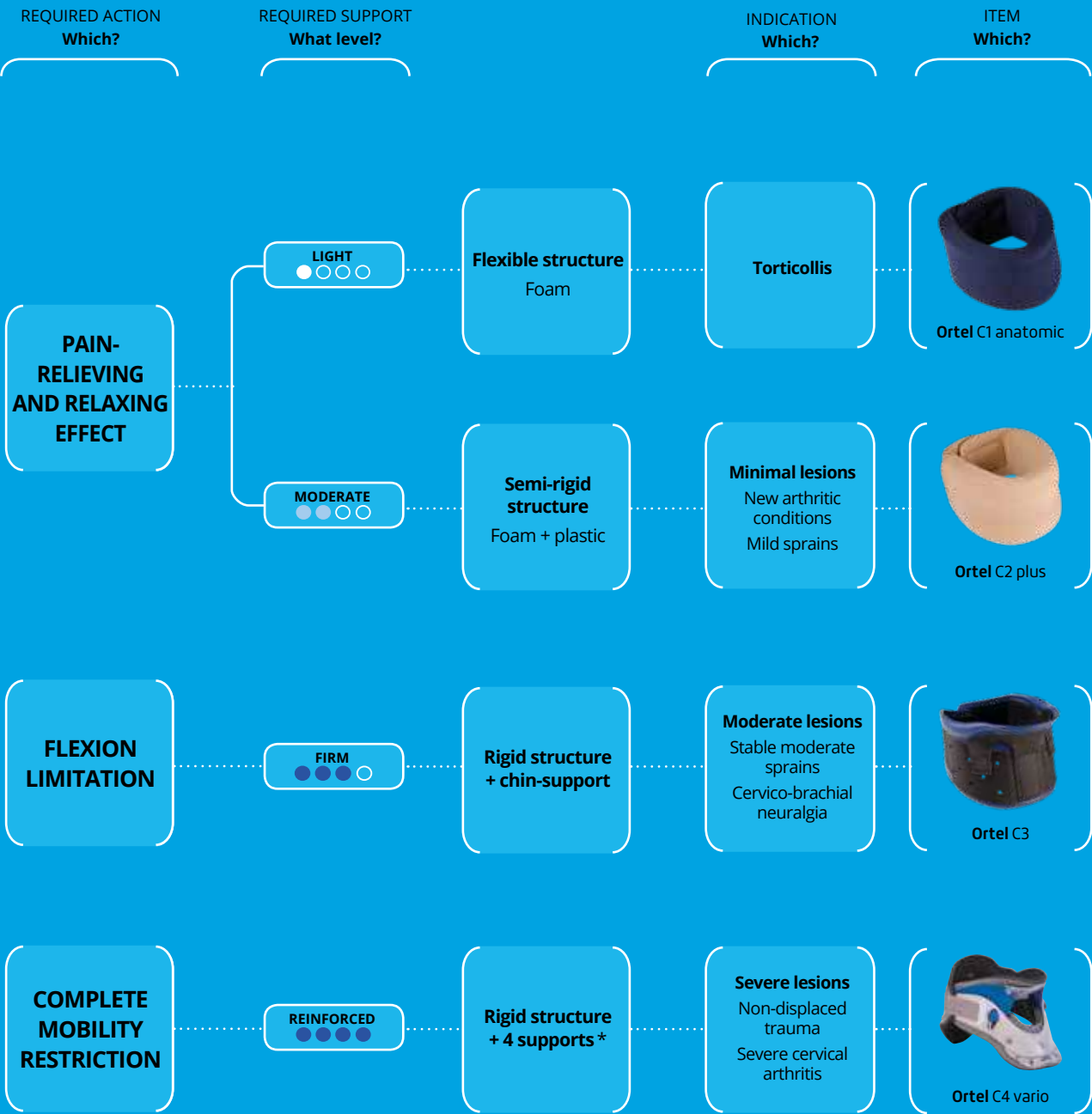
ASSOCIATED ADVICE



1 PREVENT THE CHRONIFICATION OF CERVICAL PAINS
of your patients through the prescription of the **Cervi+** pillow:
> For better distribution of the spinal load in the horizontal position.



2 REDUCE THE IMPACT OF VIBRATION ON YOUR ACTIVE AND SPORTING PATIENTS,
by suggesting **Pedipro insoles and heel inserts**:
> For an even dissipation of mechanical constraints on the lumbar spine.

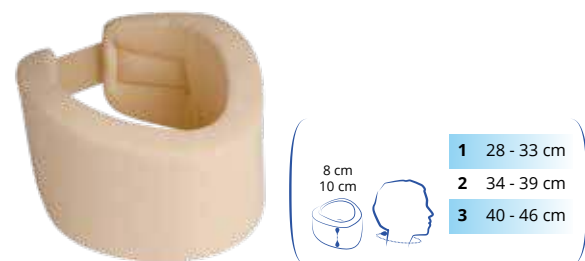


* Chin, sternal, occipital and dorsal supports

COLLARS



Flexible collars



Ortel C1 classic

2393 02

- **Analgesic support** for the cervical spine thanks to **high quality foam** and **precise Velcro fitting**
- **Removable and washable** comfortable cover
- Recommended for use during short periods

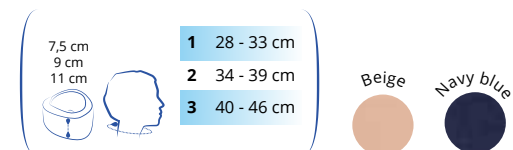


Ortel C1 anatomic

2394 02

- **Analgesic support** for the cervical spine thanks to **its compact support foam** (moderate density)
- **Anatomical shape** with rounded edges
- Removable and washable comfortable cover
- Precise Velcro fitting

Exists in a junior version



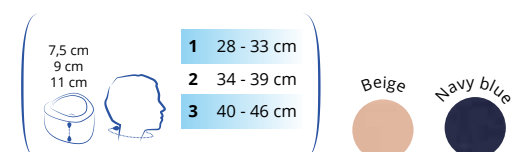
Semi-rigid collars



Ortel C2 plus

2392 04

- **Analgesic support** for the cervical spine thanks to a **semi-rigid internal structure** covered in compact supporting foam (high density)
- **Anatomical shape** with rounded edges
- Removable and washable comfortable cover
- Precise adjustment using velcro tabs



Rigid collars

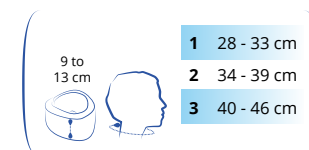


Ortel C3 2391 02 Ortel C3 classic

2390 01

- **Reinforced support** of the cervical spine through its **rigid perforated polyethylene structure**
- **Padding of the edges** in contact with the skin and perforations for better aeration and comfort
- **Adjustable height** from 9 to 13 cm, **precise and quick morphological Velcro adjustment**
- X-ray transparent

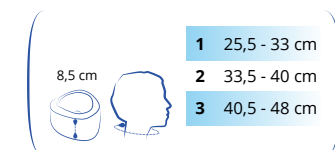
Ortel C3 classic
Adjustable height, rigid collar
without chin support



Ortel C4 rigid

2396 03

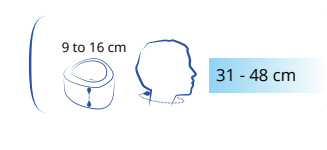
- **Rigid collar with 4 supports**
- **Firm support** for the cervical spine thanks to its 2 rigid anatomically moulded shells in hypo-allergenic polyethylene foam
- The front shell provides sternal and chin support, the rear shell provides occipital and dorsal support
- Tracheal opening
- X-ray transparent



Ortel C4 vario

T492802

- **Rigid collar with 4 height-adjustable supports**
- **Reinforced support** for the cervical spine thanks to 2 rigid shells. The occipital, chin, sternal and dorsal supports enable total immobilisation
- **Height adjustable** from 9 to 16 cm for an **anatomical fit** and **modular immobilisation** (with adjustment of flexion)
- Comfort guaranteed by the removable and washable foam inserts
- Tracheal opening
- X-ray transparent



Eclipse

U35001

Universal Cervical Collar

ORDER IN GERMANY

Adjustability

- Effortless chin height adjustment for easy fitting and maximum compliance
- Fifteen height settings for precise positioning
- Quick-Snap Fitting Disks ensure proper patient application

Features

- Anatomically molded, structurally reinforced frame for superior strength and fit
- Moisture wicking, cloth lined, open cell foam liner for comfort and breathability
- Large tracheal opening for airway access

Universal sizing

- One size fits most for reduced inventory
- Wide back panel for neck circumference greater than 48 cm

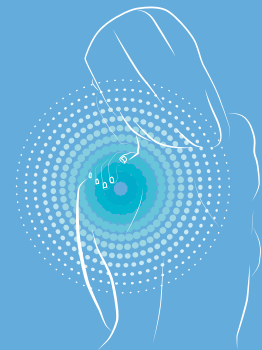
NEW



Single size











SHOULDER



The shoulder is a complex structure made up of 2 joints (the glenohumeral joint and the acromioclavicular joint) and 4 muscles (converging to form the rotator cuff). Shoulder problems, caused by injury or wear and tear, can affect the joints, tendons or nerves.

	WHICH SOLUTION FOR WHICH PATHOLOGY?							
	TRAUMA				ARTICULATION PATHOLOGIES			POST-OPERATIVE
	Humerus head fracture	Scapula fracture	Clavicle fracture	Elbow trauma	Acromio-clavicular dislocation	Glenohumeral dislocation	Rotator cuff injury without surgery	Post-operative immobilisation
IMMOBILISATION VESTS								
ImmoClassic	●	●		●	●	●	●	
Immo	●				●	●	●	
ImmoVest	●	●		●	●	●	●	●
Townsend® Shoulder Sling								●
CLAVICULAR STRAPS								
Ligaflex®			●					

TYPICAL PATIENT Which profile?	PRESCRIPTION Which?	INDICATION Which?	ITEM Which?
 ADULT Shoulder width > 34 cm	<div>Glenohumeral immobilisation vest Elbow to body immobilisation</div> <div>Shoulder and elbow immobilisation with 30° abduction pad</div> <div>Shoulder slings</div>	<div>Trauma to the shoulder and elbow</div> <div>Post-operative immobilisation</div> <div>Fracture to the clavicle</div>	<div> ImmoClassic</div> <div> Immo</div> <div> ImmoVest</div> <div> Townsend® Shoulder Sling</div> <div> Ligaflex®</div>
 CHILD Shoulder width < 34 cm	<div>Shoulder slings</div>	<div>Fracture to the clavicle</div>	<div> Ligaflex® junior</div>

SHOULDER

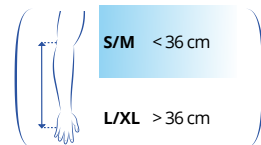
SHOULDER SLINGS



Townsend® Shoulder Sling

U05401

- Immobilisation of the shoulder with an abduction of 30° thanks to its anatomically formed pad
- Improved comfort thanks to the fabric neck-strap and padded straps
- Exercise ball included



Find out more



ImmoVest

2441 02

- Immobilisation of the shoulder and elbow to the body through its **3 strap action**
- **High coverage vest** for better protection during daily use
- Extra comfort thanks to its **breathable fabric, shoulder padding** and **anatomical form**
- Easy to fit with numbered colour-coded fitting system

HEIGHT	BUILD
< 1,70 m	size 1
1,70 - 1,80 m	size 1
> 1,80 m	size 2

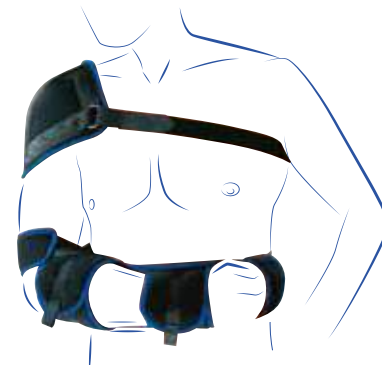
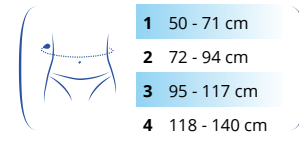
Glenohumeral immobilisation vests



ImmoClassic

2445 01

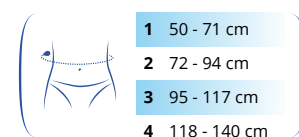
- **Immobilisation of the shoulder and elbow** thanks to the **sleeve** and the additional **adjustable strap**
- **Adjustable protective foam pads** for optimum shoulder and neck comfort
- Easy-fitting for the patient due to the velcro on the abdominal strap



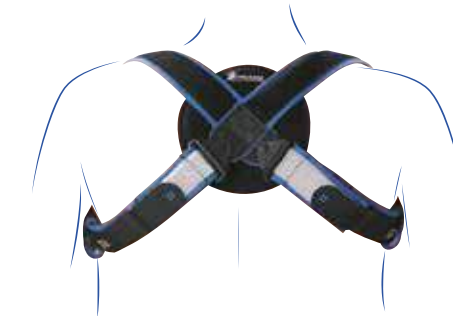
Immo

2440 01

- **Immobilisation of the elbow to the body** through its **reinforced belt** and **support bands**
- Better comfort thanks to the belt that supports the arm, **no pressure on the shoulder and neck**
- Easy for the patient to put on with its Velcro attachment



Clavicular straps



Ligaflex® clavicular straps

24500229900399

- **Secure immobilisation** thanks to a cutting system for **adjustment to the patient's size**
- **Dorsal foam anchoring pad** for optimum comfort
- Velcro fitting system and buckle fastening

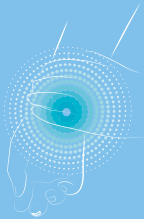
Exists in a junior version

Single size





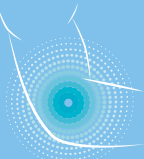
WRIST, THUMB & ELBOW



The wrist is made up of several joints giving it a high level of flexion / extension and abduction / adduction mobility.
The most common cause of wrist injury is a fall or twist, which can cause a mild or severe sprain, fracture or dislocation. The wrist can also suffer from osteoarthritis, a degenerative disease that primarily affects the thumb (basal thumb arthritis).

GOOD TO KNOW
Remember to adjust the brace's stays to fit the patient's morphology

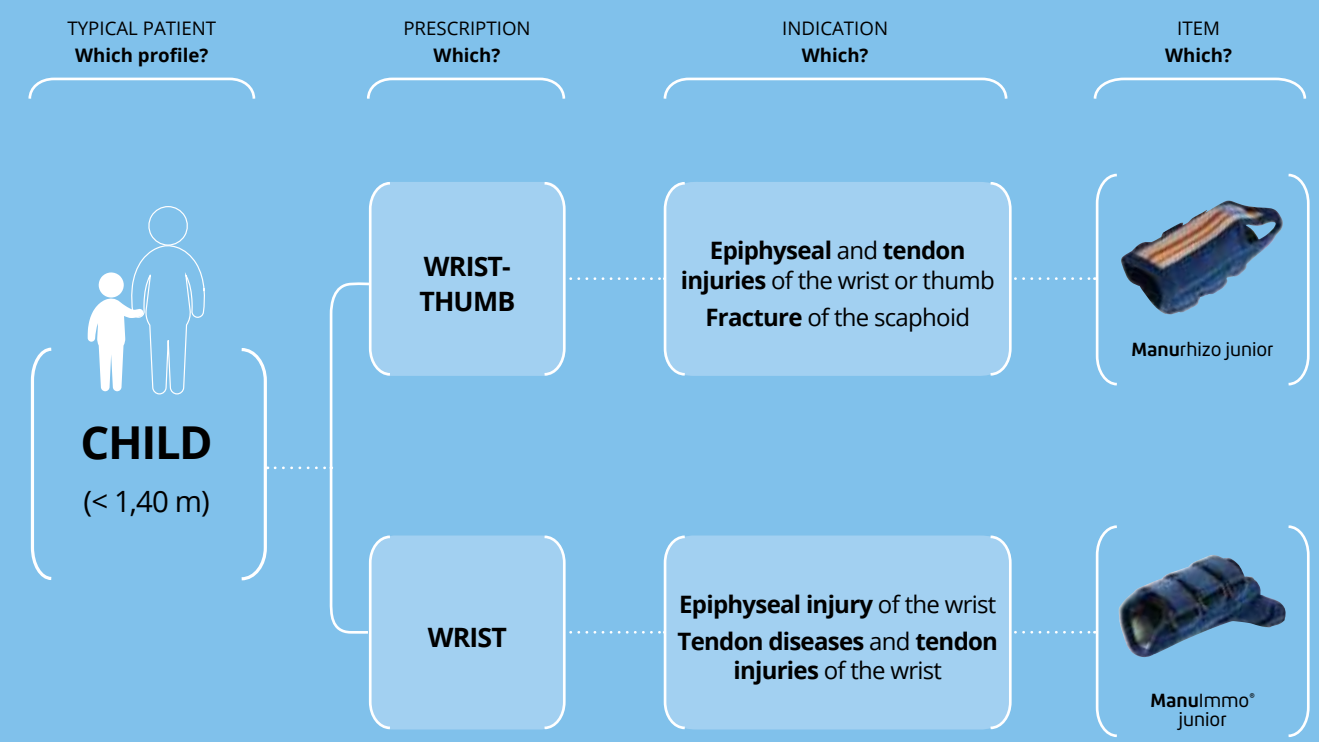
	LIGAMENT AND TENDON RELATED TRAUMA / INJURY				OSTEO-NEURAL INJURIES				POST-OPERATIVE AND RETURN TO WORK	
	Light to moderate sprain	Severe sprain	De Quervain's disease	Wrist tendinitis	Carpal tunnel without surgery	Rhizarthrosis	Osteoarthritis of the wrist	Fracture	Post-operative immobilisation	Resumption of activity
WRISTS-THUMB										
Ligaflex® pro +										
Ligaflex® Manu										
WRISTS										
Ligaflex® Action										
Ligaflex® pro										
Ligaflex® Classic										
Ligaflex® Classic open										
Ligaflex® Immo										
Dynastab® Dual										
THUMB SPLINTS										
Ligaflex® Rhizo										
Rhizo-Pro										
PollexMed										
FINGER										
Mallet finger										
Distal phalanx splint										



	LIGAMENT AND TENDON RELATED TRAUMA / INJURY		POST-OPERATIVE
	Epicondylitis	Median epicondylitis	
ELBOW BRACES			
Silistab® Epi			
Epi-Med Pro master			
Epi-Med			
Condylex			
ROM elbow brace			

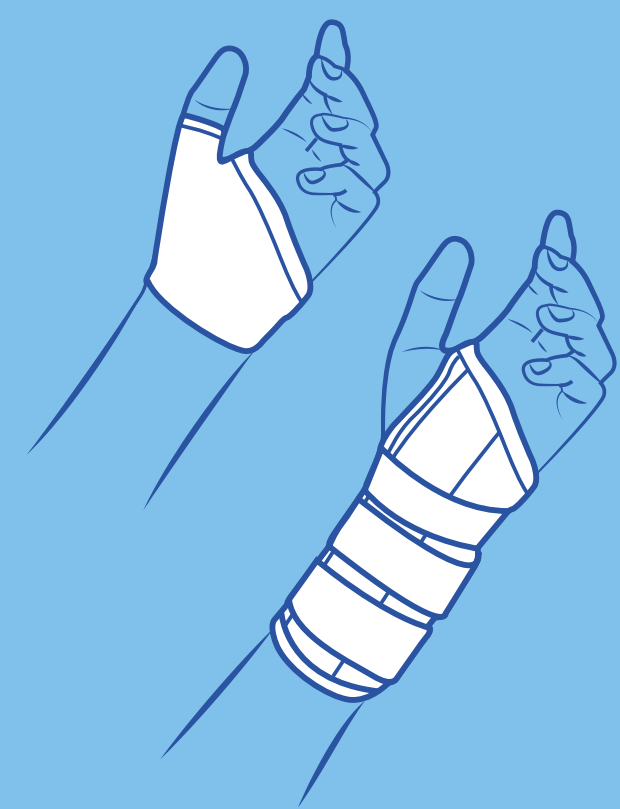
WRIST, THUMB & ELBOW

WRIST, THUMB & ELBOW



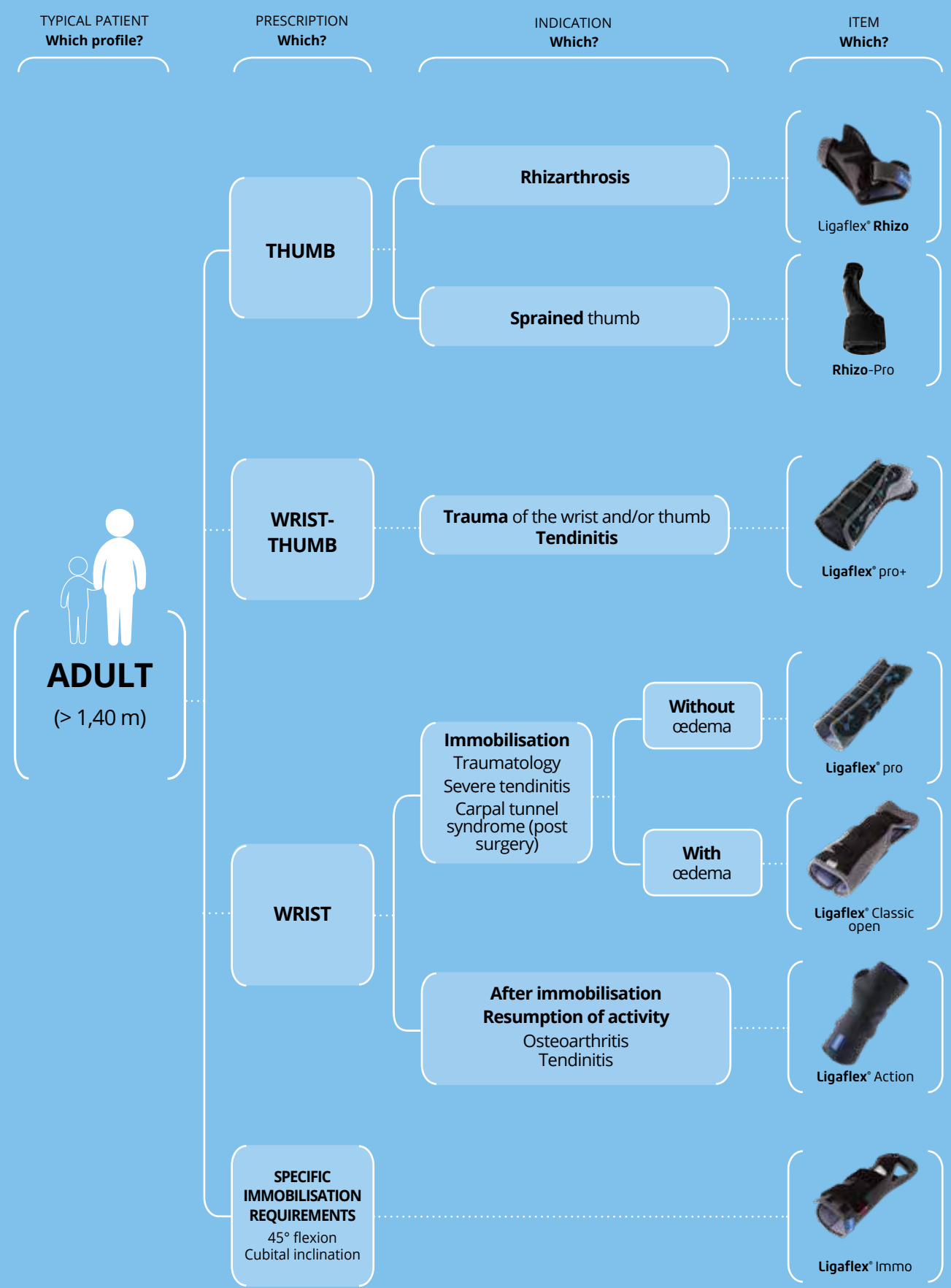
ACTION PRINCIPLE

OF THE IMMOBILISATION SPLINTS
for the wrist, the thumb and/or wrist-thumb



- The immobilisation splint puts one or several articulations in the **resting position**. It aims to:
- **Limit the pain.**
 - **Stabilize the articulation(s)** in the desired therapeutic position while **allowing mobilisation** of adjacent areas.
 - **Enable consolidation and healing**

WHICH BRACE FOR WHICH INDICATION?



WRIST, THUMB & ELBOW

WRIST AND THUMB SPLINTS

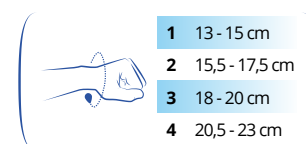


Ligaflex® pro +

2434 02

- **Easy tightening system** (Quick Lacing System technology) for **simplified and homogeneous adjustment**
- **Rigorous support of** wrist and thumb thanks to **two anatomic** and conformable **stays**
- Soft **protection jersey, 3D antibacterial knit**, light and wicking for better moisture evacuation, adapted to extended wearing

2 models : right and left



Find out more



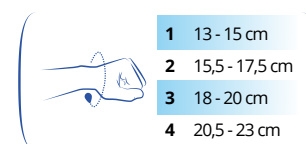
Ligaflex® Manu

2430 02

- **Firm support for the thumb and wrist** thanks to the 2 conformable, **anatomical stays** (palm and thumb column)
- **Antibacterial-treated 3D knit**, lightweight and breathable for effective moisture-wicking. Suitable for long-term wear
- 2-in1 straps for **an even support**

2 models: right and left

Exists in a junior version



Wrist braces



Ligaflex® Classic

2435 02

- **Firm wrist support** thanks to the **anatomically shaped** and conformable **palm reinforcement**
- **Antibacterial-treated 3D weave**, lightweight and breathable for effective moisture-wicking, suitable for long-term wear.
- 2-in1 straps for **an even support**

2 models: right and left

Exists in a junior version



Ligaflex® Classic open

2437 02

- **Fully opening for easy fitting and removal**, more appropriate in the event of oedema. Particularly indicated in post-traumatic situations
- **Firm wrist support** thanks to the conformable **palm stay**
- **Antibacterial-treated 3D knit**, lightweight and breathable for effective moisture-wicking. Suitable for long-term wear

Ambidextrous model

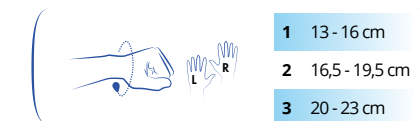
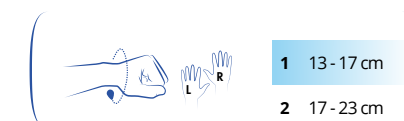
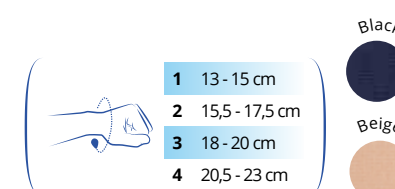


Dynastab® Dual

7040 02

- Wrist support thanks to anatomically shaped palm and back of the hand stays
- Antibacterial-treated 3D weave, lightweight and breathable for effective moisture-wicking

Ambidextrous model



Ligaflex® pro

2433 02

- **Easy tightening system** (Quick Lacing System technology) for **simplified and homogeneous adjustment**
- **Rigorous support of** wrist thanks to **anatomic** and conformable **palmar stay**
- Soft **protection jersey, 3D antibacterial knit**, light and wicking for better moisture evacuation, adapted to extended wearing

Ambidextrous model



Find out more



WRIST BRACES



Ligaflex® Action 2436 02

- **Anatomic** and elastic **knit** enhancing compression and **increasing the proprioceptive effect**
- **Evolutive support** thanks to the conformable and removable palmar stay, possibility to limit wrist movements depending on the need
- **Modular compression** and possibility to adjust the pressure applied with the additional removable elastic strap

2 models: right and left



Ligaflex® Immo 7080 02

- **Firm wrist support in extension** thanks to **2 anatomically-shaped stays at the palm and back of the hand**. Radio-transparent, conformable stays
- **Long length** for optimum immobilisation
- **Progressive brace with additional reinforcement kit**. Can also immobilise:



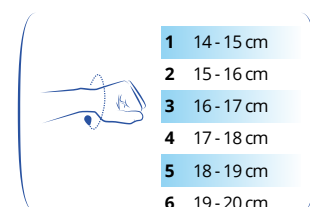
during flexing



during flexing and cubital inclination

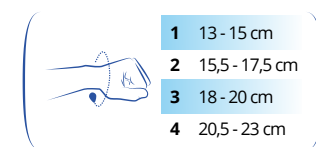
- **Antibacterial-treated 3D knit**, lightweight and breathable for effective moisture-wicking. Suitable for long-term wear

2 models: right and left



- 1 14 - 15 cm
- 2 15 - 16 cm
- 3 16 - 17 cm
- 4 17 - 18 cm
- 5 18 - 19 cm
- 6 19 - 20 cm

Find out more



- 1 13 - 15 cm
- 2 15,5 - 17,5 cm
- 3 18 - 20 cm
- 4 20,5 - 23 cm

Stay kit Ligaflex® Immo

7080 90

Conformable stays

2 models: right and left

Thumb splints



ORDER IN GERMANY

Rhizo-Pro

T480273

- **Immobilisation of the thumb column**
- Perforated wire frame with soft breathable lining and padding around the articulations

Ambidextrous model



ORDER IN GERMANY

PollexMed

T480212 (50 mm wide strap)

T640202 (lining - single size)

- **Immobilisation of the metacarpophalangeal and carpo-metacarpal articulations of the thumb**
- **Thermomouldable** and anatomical shape for better morphological adjustment

2 models: right and left

Finger splint

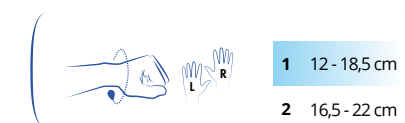


Distal phalanx splint

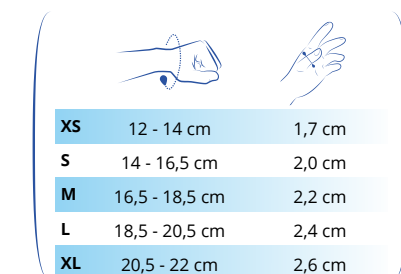
7084 02

- **Immobilisation of the last two phalanges**, extension of the distal articulation
- Perforated polypropylene splint allowing the immobilised finger to breathe

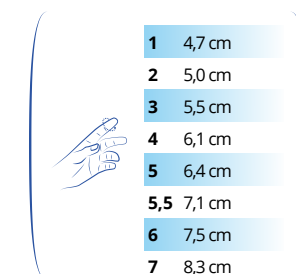
Sold in bags of 6 splints



- 1 12 - 18,5 cm
- 2 16,5 - 22 cm



XS	12 - 14 cm	1,7 cm
S	14 - 16,5 cm	2,0 cm
M	16,5 - 18,5 cm	2,2 cm
L	18,5 - 20,5 cm	2,4 cm
XL	20,5 - 22 cm	2,6 cm



- 1 4,7 cm
- 2 5,0 cm
- 3 5,5 cm
- 4 6,1 cm
- 5 6,4 cm
- 5,5 7,1 cm
- 6 7,5 cm
- 7 8,3 cm



Find out more

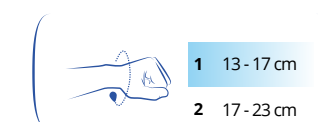


Ligaflex® Rhizo

7090 02

- **Immobilisation of the thumb in a painless position by a patented wire frame** in the thumb web space
- **Opening at the thumb column** to prevent any pressure on the painful zone
- Particularly suitable for basal thumb arthritis
- **Preserves grip movements and maintains the wrist's range of motion**
- **Antibacterial-treated 3D knit**, lightweight and breathable for effective moisture-wicking. Suitable for long-term wear

2 models: right and left



- 1 13 - 17 cm
- 2 17 - 23 cm



ELBOW BRACES AND TENNIS ELBOW ARMBANDS



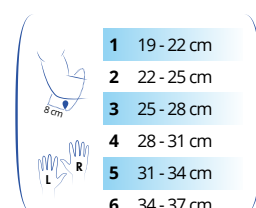
Elbow braces



Silistab® Epi

2305 02

- **Relief** guaranteed by the **silicone inserts with a massage effect** and the **compressive knit** providing a **reinforced proprioceptive effect**
- Adjustable compression thanks to the additional removable strap
- **Anatomically-shaped knit** with **comfort zones** at the elbow crease and patented pull tabs



Find out more



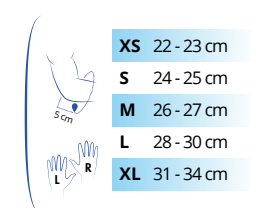
Tennis-elbow armbands



ORDER IN GERMANY

Epi-Med Pro master T350801

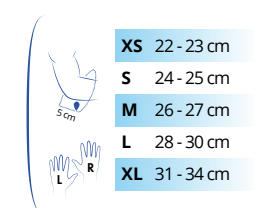
- **Rigid armband with double pressure targets** thanks to the silicon inserts
- Additional inserts (Flexi-Pads) available to increase pressure if required
- Adjusted with the Velcro fastening, compression area indication for easier fitting



ORDER IN GERMANY

Epi-Med T480013

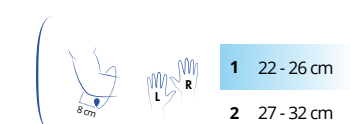
- **Rigid arm band with dual targeted pressure** with comfortable felt inserts
- Easy adjustment by velcro fastening tabs



Condylex

7007 02

- **Pressure adjustment** thanks to the Velcro fastening with tightening strap
- Vibration absorbing inner foam

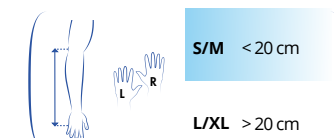


Hinged post-op elbow brace

ROM elbow brace

U05301

- Adjustable ROM hinge
- Tool-free length-adjustable system (Snaplock system)
- Rigid uprights that can be adapted to the patient's shape
- Breathable fabrics (BreezePads)





KNEE



The knee is a complex system made up of bones, ligaments, tendons and cartilage structures enabling us to assume a static position and walk. Its mobility involves a combination of rolling and sliding movements. Most knee problems are caused by injury (sprain or cruciate ligament rupture) or degenerative conditions (osteoarthritis).

GOOD TO KNOW
Remember to adjust the knee brace's stays to fit the patient's morphology

WHICH SOLUTION FOR WHICH PATHOLOGY?

	TRAUMA INJURIES					PREVENTION AND RE-EDUCATION / RETURN TO WORK				CHRONIC CONDITIONS				
	Mild sprain	Moderate sprain	Severe sprain	Knee immobilisation	Patellar dislocation	Post-operative re-education	Resumption of activity	Resumption of sporting activity	Proprioception	Patellar tendon disease	Patellar syndromes	Mild osteoarthritis	Moderate to severe osteoarthritis	Chronic laxity
OFF-LOADING KNEE BRACES														
RebelReliever®														
Dynamic Reliever®														
NEW Action Reliever														
FLEXIBLE KNEE BRACES														
GenuSoft														
GenuAction														
GenuExtrem														
Ligastrap® Genu														
PATELLAR KNEE BRACES														
GenuPro activ														
GenuPro comfort														
Silistab® Genu														
Patellar bandage														
PATELLO-FEMORAL KNEE BRACE														
NEW PatellaReliever														
LIGAMENT KNEE BRACES														
Genu Ligaflex®														
Genu Dynastab®														
Genu Ligaflex® ROM														
GenuControl														
Rebel® Standard														
Rebel® Pro														
Rebel® Lock														
KNEE SPLINTS														
Genuimmo® 0°, 20°														
Ligaflex® Post-op														
Ligaflex® Immo, 0°, 20°														
ROM Suspension solution														
ROM-R														

KNEE

ACTION PRINCIPLE

OF THE KNEE BRACES AND KNEE SPLINTS

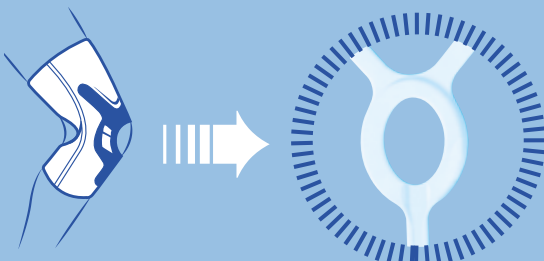
PROPRIOCEPTIVE KNEE BRACE

- > **Improved proprioception** (perception of the body in space) via the use of a **compressive knit**.
- > Used in the event of **mild joint pain** or **resumption of activities**.



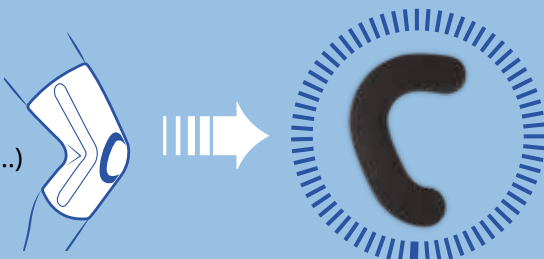
PATELLAR KNEE BRACE

- > **Kneecap supported** by the **silicone ring** and **proprioceptive effect** thanks to the **compressive knit**
- > Used in the event of **tendinitis** or a **chronic condition** (osteoarthritis, etc.).



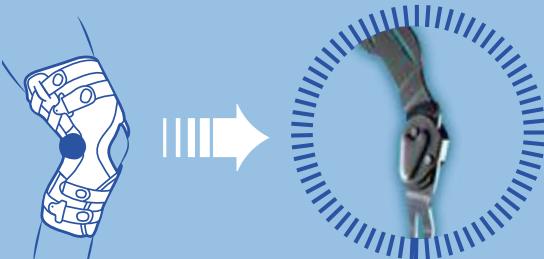
PATELLO-FEMORAL KNEE BRACE

- > **Patella realignment** in its **physiological axis** and **proprioceptive effect** thanks to **compressive knitting**
- > Used in cases of **patella malalignment** (patello-femoral syndrome, dislocation / subluxation, patello-femoral arthritis...)



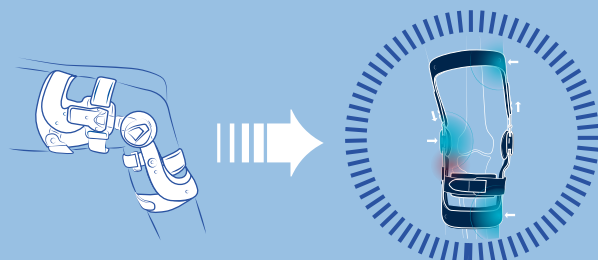
LIGAMENT KNEE BRACE

- > **Supports the knee** via the use of **hinged rigid reinforcements**
- > Used in the phase immediately **following injury** (depending on the severity), or in the **resumption of sports phase**



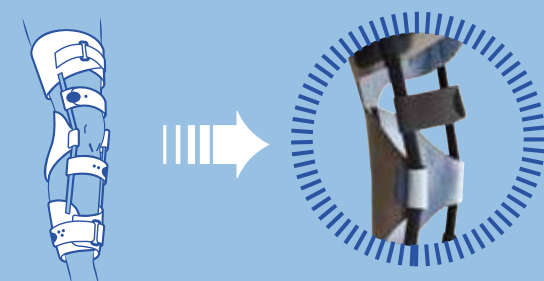
OFFLOADING KNEE BRACE

- > **Offload of the damaged compartment** thanks to a **3-point system**.
- > Used in case of **unicompartmental femoro-tibial osteoarthritis**.



KNEE SPLINT

- > Analgesic and protective effect due to **complete immobilisation** of the knee
- > Used immediately **after an injury** or **postoperatively**.



WHICH SOLUTION FOR WHICH PATHOLOGY?



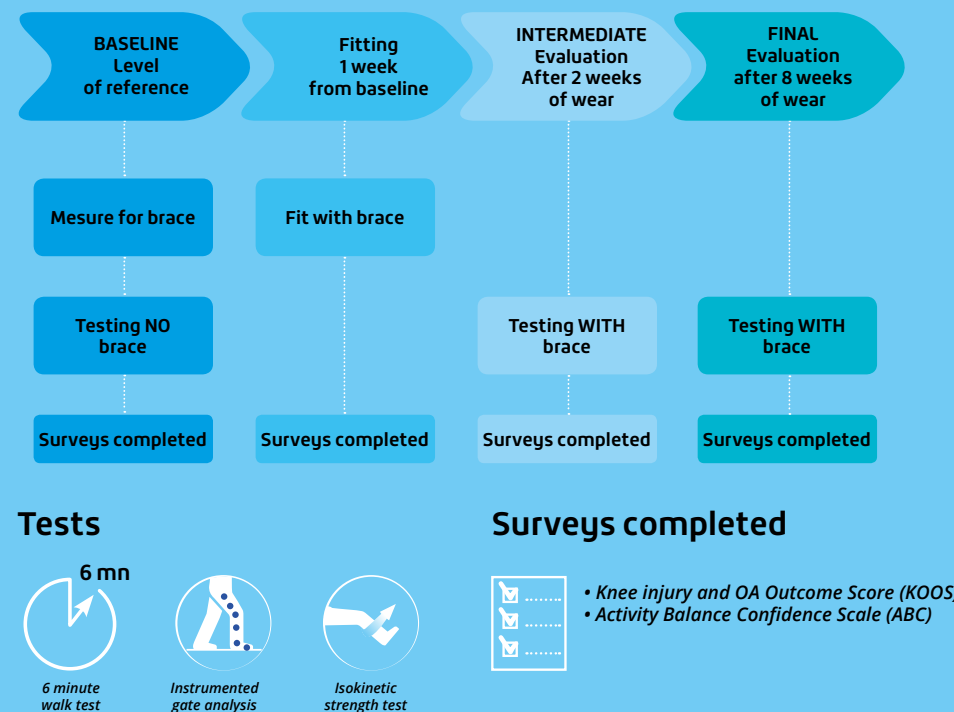
Improved function and by using an off-loading orthosis on the

Improvements in Function and Strength with Decompressive Bracing of the Osteoarthritic Knee. E. Lamberg et al. Journal of Prosthetics and Orthotics. 28(4):173-179, Oct 2016.

Objectives

Evaluate, when using **RebelReliever®** brace, the change of the biomechanics of the knee, its clinical effect and its effect on the function

Design of the study



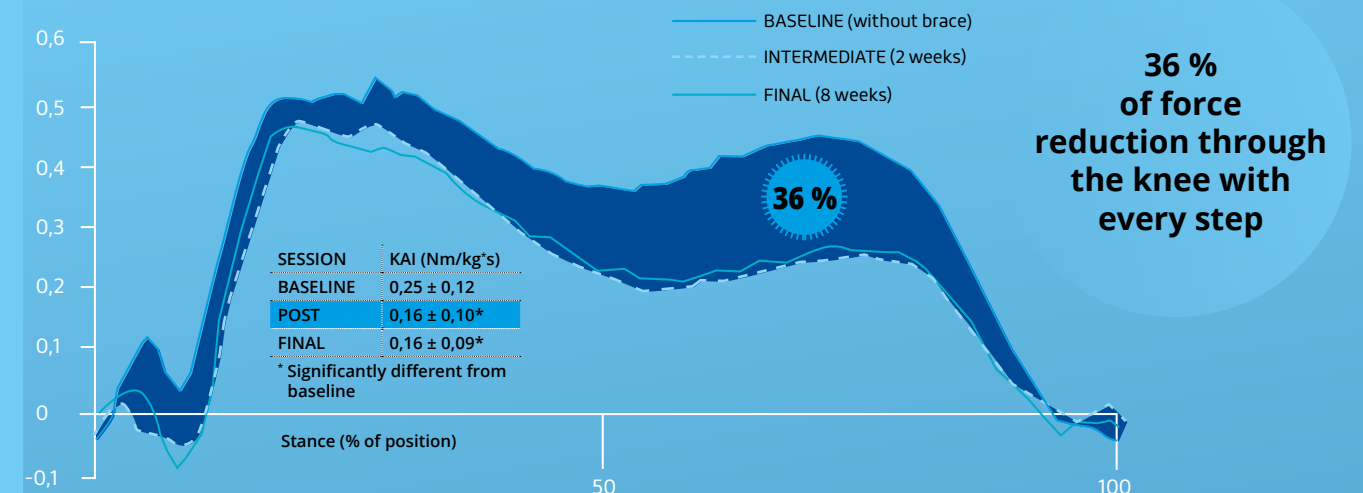
Results

Population

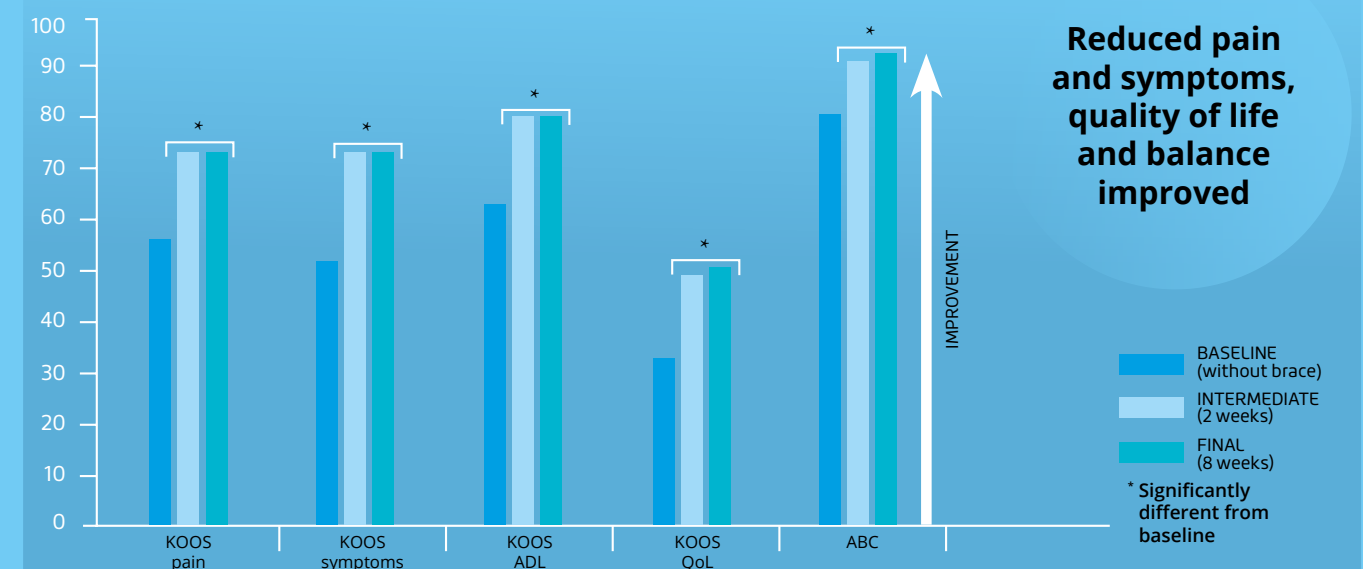
n = 15		
Mean age (years)	55 (39 - 70)	
Gender	12 men 3 women	
Mean BMI (kg/m ²)	25 (24 - 49)	
Kellgren-Laurence grade (%)	Grade II	20 %
	Grade III	67 %
	Grade IV	13 %

strength osteoarthritic knee

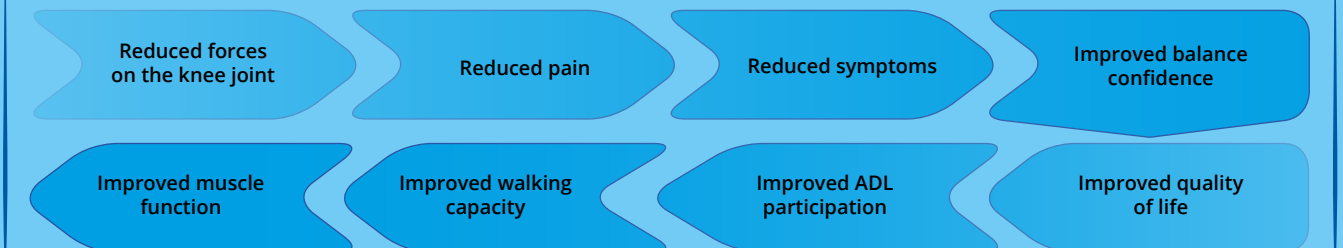
Moment of adduction of the knee (Nm/kg)



Survey results



Conclusion



CLINICAL STUDIES

Efficiency and safety of the RebelReliever® in patients with knee osteoarthritis

ROTOR Study

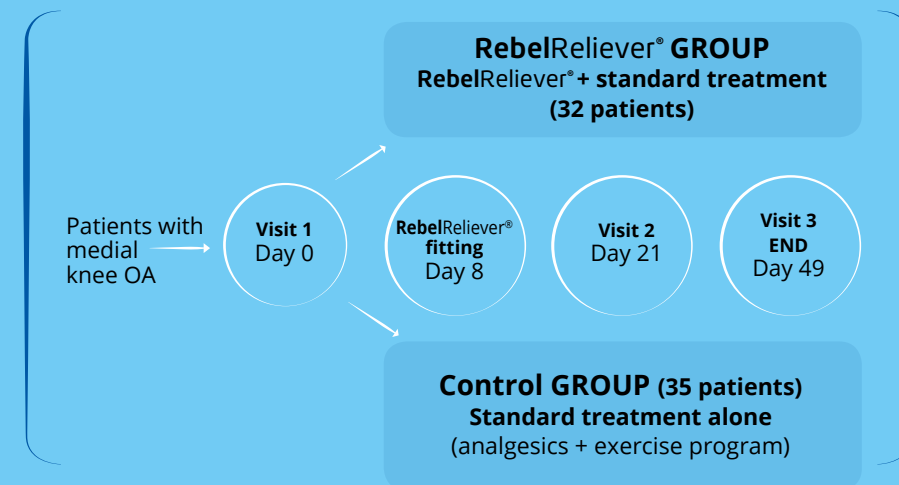
Randomised controlled trial evaluating the **RebelReliever®** brace effect + standard treatment vs standard treatment alone on 67 patients suffering from symptomatic medial knee osteoarthritis.

**RebelReliever®
knee brace
improves function**

Objective

To evaluate the efficacy of the **RebelReliever®** knee brace in combination with standard treatment after a 6-week treatment period, in patients with symptomatic medial knee osteoarthritis

Study Design

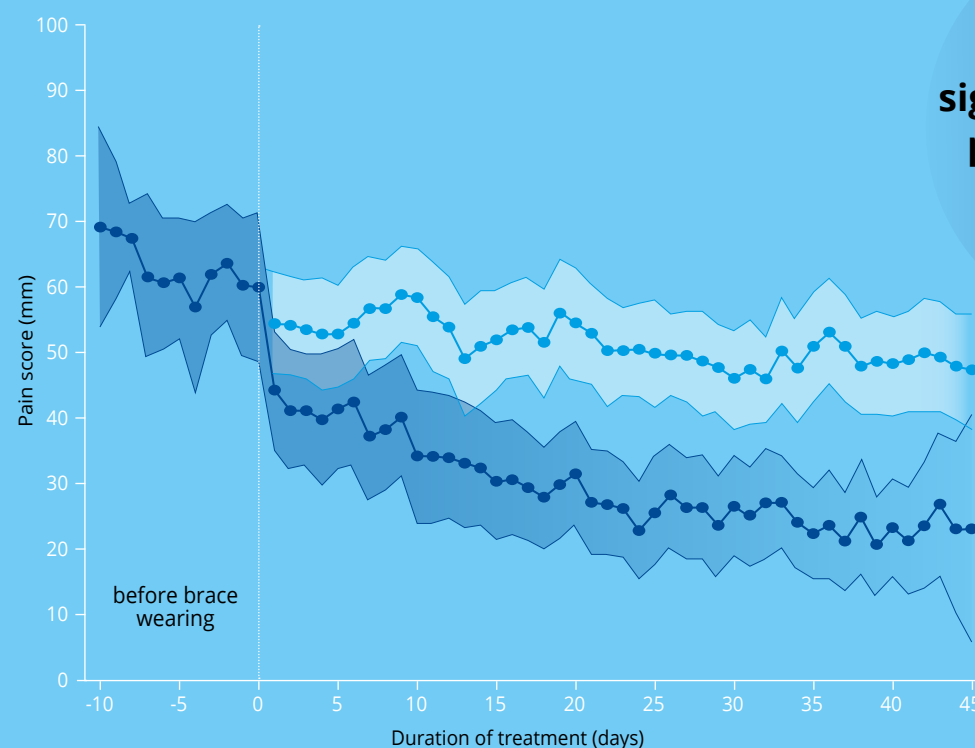


Results

Population

	RebelReliever® (n = 32)	Controlled (n = 35)
Mean age (years)	64,8 ± 11,7	66,6 ± 7,2
Female (%)	75	57,1
Mean BMI (kg/m²)	29,2 ± 4,4	28,1 ± 5,1
Mean OA duration (years)	8,4 ± 6,8	8,9 ± 7,4
Kellgren-Laurence Grade (%)		
Grade II	31,2	20,0
Grade III	46,9	62,9
Grade IV	21,9	17,1

Pain score evolution



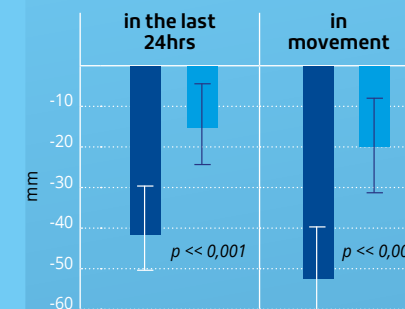
**The
RebelReliever®
knee brace
significantly reduces
pain immediately
and for a
sustainable
time**

Control

RebelReliever®

p-value < 0,01

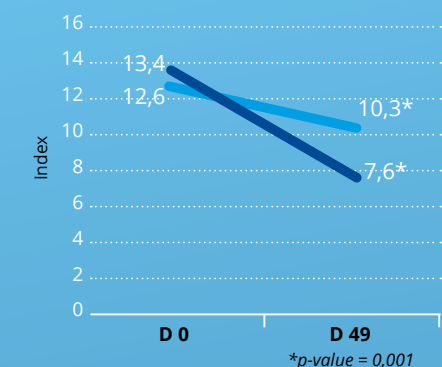
Reduction of mean pain



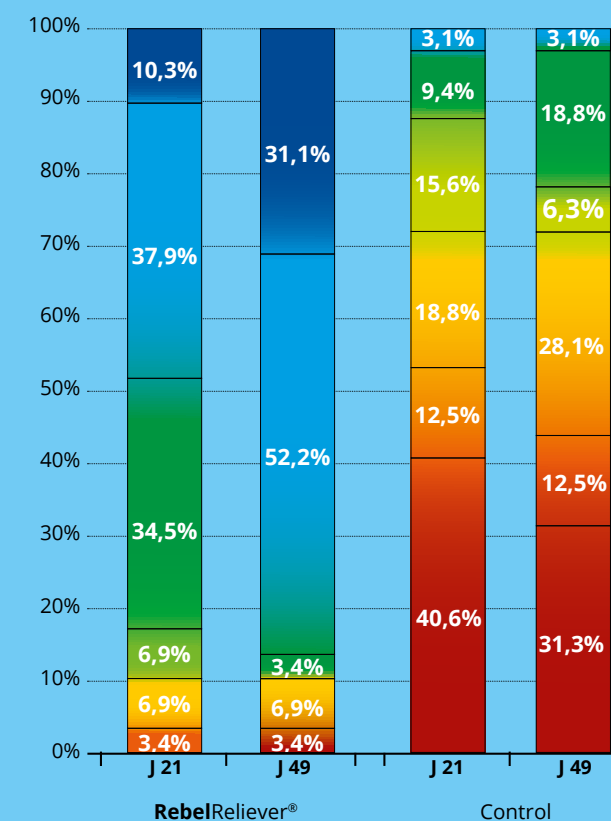
**RebelReliever®
brace also reduces
pain when
in movement**

RebelReliever®
Control

Lequesne algofunctional index



Patient clinical global impression of change



**More than 80 %
of patients feel a
definite and considerable
improvement of their
condition with
RebelReliever® brace
by the end of the trial**

- A great deal better and a considerable improvement that has made all the difference
- Better and a definite improvement that has made a real and worthwhile difference
- Moderately better, and a slight but noticeable change
- Somewhat better, but the change has not made any real difference
- A little better, but no noticeable change
- Almost the same, hardly any change at all
- No change (or condition has gotten worse)

Conclusion

Superiority of **RebelReliever®** knee brace + standard treatment vs standard treatment alone was demonstrated. Combining **RebelReliever®** knee brace with standard treatment procures a significative advantage to patients and constitutes a powerful non pharmacological therapeutic strategy to handle knee osteoarthritis.

KNEE BRACES

Off-loading knee braces

Off-loading knee brace

NEW



RebelReliever®

U03309

- **Loadshifter** system to **offload the injured compartment** for knee arthritis cases
- Adjustable without tools
- **Held in place** by the **TM5+ articulation** reproducing the natural movement of the knee and the **suspension strap** (US patent / Thuasne innovation)

2 models: right and left

Standard sizes

	(a)	15 cm	(b)	15 cm
	(a)	(b)	(c)	
XS	31 - 39 cm	7,5 - 9 cm	28 - 32 cm	
S	39 - 47 cm	9 - 10 cm	31 - 35 cm	
M	47 - 53 cm	10 - 11,5 cm	34 - 38 cm	
L	53 - 60 cm	11,5 - 12,5 cm	37 - 40 cm	
XL	60 - 64 cm	12,5 - 14 cm	38 - 43 cm	
XXL	64 - 71 cm	14 - 15,5 cm	43 - 48 cm	

Adapted sizes

	(a)	15 cm	(b)	15 cm
	(a)	(b)	(c)	
XS/S	31 - 39 cm	8,5 - 9,5 cm	31 - 35 cm	
S/M	39 - 47 cm	9,5 - 11 cm	34 - 38 cm	
M/S	47 - 53 cm	9,5 - 11 cm	31 - 35 cm	
M/L	47 - 53 cm	11 - 12 cm	37 - 40 cm	
L/M	53 - 60 cm	11 - 12 cm	34 - 38 cm	
L/XL	53 - 60 cm	12 - 13,5 cm	38 - 43 cm	
XL/L	60 - 64 cm	12 - 13,5 cm	37 - 40 cm	
XL/XXL	60 - 64 cm	13,5 - 14,5 cm	43 - 48 cm	
XXL/XL	64 - 71 cm	13,5 - 14,5 cm	38 - 43 cm	

Find out more



Dynamic Reliever®

U30801

PATIENT COMPLIANCE

- **Comfortable, discreet and lightweight** (450 g) for a long-term wear
- Easy to put on and take off thanks to the **quick release buckles**

ADJUSTABLE CORRECTIVE FORCE

- **Telescoping Townsend Motion hinge** (patent pending) for a dynamic offloading when walking
- Adjustment by **contouring the upright**, tightening the straps or increasing condylar pad thickness

SUPPORT

- Tight support thanks to the calf strap and the **anatomical hinge system** (Townsend Motion)
- Adjustable and comfortable semi-rigid thigh and calf shells
- **Adjustable tibia bolster** (patent pending) preventing brace rotation

MODULAR COMPONENTS

- **Modular components** (thigh shell, hinge and calf shell) that clip together **with no tools (patent pending)** to fit all body shapes

2 models: right and left

	(a)	15 cm	(b)	15 cm
	(a)	(b)	(c)	
1	35 - 45 cm	28 - 35 cm		
2	45 - 61 cm	35 - 43 cm		
3	61 - 71 cm	43 - 48 cm		

Find out more



ActionReliever

2349 01

EFFICACY

- **Dynamic 3-point pressure off-loading mechanism**
- Straps creating a dynamic 3-point pressure system: most effective on heel strike
- Combined rigid adjustable hinge on the affected side and flexible stay on the unaffected side
- Cross strap capture system allows the proper anchoring of the straps during the gait cycle
- **Medical grade compression to restore the proprioceptive message**

COMPLIANCE

COMFORT

- Anatomical knitting with comfort zones at popliteal area and at brace edges
- Anatomically shaped straps, self-oriented and adjustable
- Silicon thread integrated to the knitting to prevent migration

LOW PROFILE

- Invisible under most clothes

FITTING CONSISTENCY

- Easy to slide up the leg thanks to the anatomical knitting
- Easy to close: effortless magnetic buckles with finger loop, snap into place automatically
- Easy to adjust: the self-dosing adjustment possible by tighten the front straps

Available in medial left/lateral right and medial right/lateral left

	1	32 - 34 cm
	2	35 - 37 cm
	3	38 - 41 cm
	4	42 - 45 cm
	5	46 - 49 cm
	6	50 - 53 cm

Find out more



KNEE

FLEXIBLE PROPRIOCEPTIVE KNEE BRACES

Proprioceptive knee braces



GenuSoft

2320 03

- **Proprioception** provided by the elastic compressive weave (about 17 mmHg)
- **Anatomically-shaped weave** with comfort zone beneath the knee



GenuAction

2325 02

- **Support and proprioception** provided by the elastic compressive weave (about 23 mmHg)
- **Anatomically-shaped weave** with comfort zone around the patellar beneath the knee

Exists in a junior version



GenuExtrem

2321 01

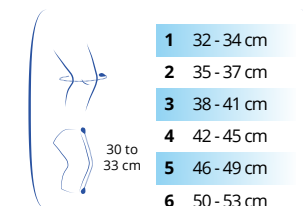
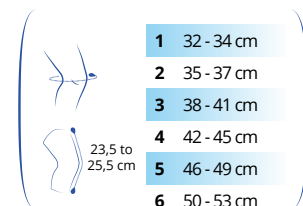
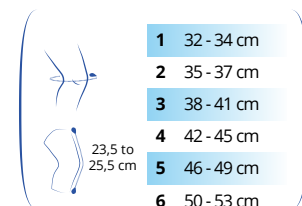
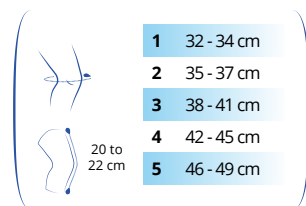
- **Support and proprioception** provided by the elastic compressive knit (approximately 28 mmHg)
- **Additional lateral reinforcement** provided by flexible stays
- **Anatomically-shaped knit** with comfort zones over the kneecap and behind the knee
- **Easy to put on** thanks to patented pull tabs
- **Lateral silicone anti-slip system** for better hold



Ligastrap® Genu

2170 02

- **Double strapping system** with set-up marks thanks to numbered and pre-oriented straps
- **Proprioception provided** by the compressive knit (about 26 mmHg)
- **Anatomical knit** with comfort zones over the kneecap and the back of the knee
- **Easy to put on** thanks to the patented pull-on tabs



Find out more



PATELLAR AND FEMORO-PATELLAR KNEE BRACES

Patellar knee braces



Silicone patellar insert

GenuPro activ 2347 02

- **Proprioceptive stimulation** provided by the silicone **patellar insert** and the elastic compressive knit (approximately 26 mmHg). The patellar insert provides firm support for the kneecap and serves as a protective guide for the patellar tendon
- **Anatomical design** for better adjustment to shape: anatomical cut at the calf, comfort zone behind the knee, stretchy knit over the thigh and calf
- **Flexible lateral reinforcements**. **Lateral silicone anti-slip system** for better hold



Silicone patellar insert

GenuPro comfort 2346 03

- **Silicon patellar insert**
- **Proprioception** provided by the elastic compressive weave
- **Flexible lateral stays**
- **Extra comfort** thanks to its **hyper extensible** weave at the rear
- Lateral silicon anti-slip system for better hold



Silicone patellar insert

Silistab® Genu 2340 05 (white) 2345 04 (black)

- **Silicone patellar insert**
- **Proprioception** provided by the elastic compressive knit (approximately 18 mmHg)
- **Flexible lateral reinforcements**
- Comfortable with its **jersey** behind the knee
- Lateral silicone anti-slip system for better hold

2 versions: patellar open (white) and patellar closed (black)

	(a) 14 cm	(b) 12 cm
	(a)	(b)
1	35 - 38 cm	25 - 28 cm
2	38 - 41 cm	28 - 31 cm
3	41 - 44 cm	31 - 34 cm
4	44 - 47 cm	34 - 37 cm
5	47 - 51 cm	37 - 41 cm
6	51 - 55 cm	41 - 45 cm
6+	55 - 59 cm	43 - 47 cm

N.B. : if the two measurements do not correspond to the same size, choose the size corresponding to measurement (b)



1	31 - 33 cm
2	34 - 36 cm
3	37 - 39 cm
4	40 - 42 cm
5	43 - 45 cm
6	46 - 48 cm



1	31 - 33 cm
2	34 - 36 cm
3	37 - 39 cm
4	40 - 42 cm
5	43 - 45 cm
6	46 - 48 cm

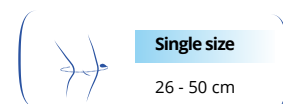


Patellar bandage



Patellar bandage 2304 01

- Applies **local pressure** over the patellar tendon and **supports the kneecap** due to its anatomical shape



Patello-femoral knee brace

NEW



PatellaReliever 2348 01

- **Patellar insert with dynamic adjustment system:**
 - Anatomical and asymmetrical shape
 - Lightweight EVA foam
 - Adjustment by system of straps and lace to adapt to the patient's morphology
- **Anatomic knitting** with **comfort zones** and **integrated silicone**

1	32 - 34 cm
2	35 - 37 cm
3	38 - 41 cm
4	42 - 45 cm
5	46 - 49 cm
6	50 - 53 cm

Find out more



LIGAMENT KNEE BRACES

Hinged ligament knee braces

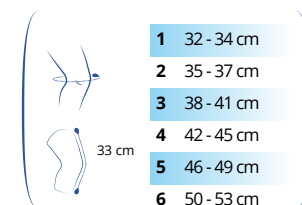
Hinged ligament knee braces



Genu Dynastab®

2370 05

- Provides **stability** via **bi-axial articulation stays** and **adjustable rigid straps**
- **Semi-circular straps** to avoid any risk of tourniquet effect
- **Anatomically-shaped design** for better **morphological adjustment**: comfort zone around the back of the knee, stretch weave on the thigh



NEW



Open short version (30 cm)



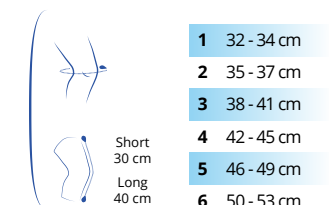
Genu Ligaflex®

2375 04 (open)

- **Anterior opening** for easy application
- User friendly buckles

New open version available in April 2018 (ref. 2375 05)

Genu Ligaflex® open version exists in two heights, short and long



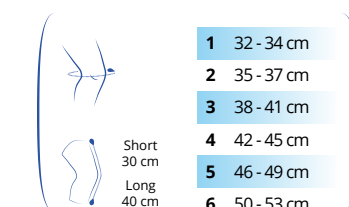
Closed short version (30 cm)

Genu Ligaflex®

2375 03 (closed)

- **Hold-in-place** provided by the TM5 articulation reproducing the knee's natural movement and by the **suspension strap** (US patent/Thuasne innovation)
- Stability provided by the **aluminium lateral frames** with anatomic shape
- **Anatomical knit** with integrated silicone antislip and **comfort zones** on the knee cap and the back of the knee
- **Easy to slip on** thanks to the stretch knit and the patented pull-on tabs
- **Homogeneous bilateral fastening** provided by the semi-circular straps

Genu Ligaflex® open version exists in two heights, short and long



Closed long version (40 cm)



Open long version (40 cm)



LIGAMENT KNEE BRACES



Find out more



Genu Ligaflex® ROM

2386 05 (open) - 2386 04 (closed)

- Holds in place thanks to the **TM5+ articulation** reproducing the knee's natural movement and by the **suspension strap** (US patent/Thuasne innovation)
- **No-tool** bending and stretching movement limitation with wide adjustment range
 - Bending: 0°, 30°, 45°, 60°, 75°, 90°
 - Stretching: 0°, 5°, 10°, 15°, 20°, 30°, 40°
- **4 anchor points** on the frame for proper compliance with bending/stretching rules
- **Overlap opening** on the front of the leg (open version), **homogenous closing** provided by the semi-circular straps
- **Anatomical knit** with integrated anti-slip silicone and **comfort zones** on the kneecap (closed version) and on the back of the knee

Genu Ligaflex® ROM closed version exists in *two heights, short and long*

Genu Ligaflex® ROM open version exists in *two heights, short and long*

	1	32 - 34 cm
	2	35 - 37 cm
	3	38 - 41 cm
	4	42 - 45 cm
	5	46 - 49 cm
	6	50 - 53 cm

Rigid ligament knee braces



Find out more



GenuControl 7857 01

- **Held in place** by the **TM5+ articulation** reproducing the natural movement of the knee and the **suspension strap** (US patent / Thuasne innovation)
- **Stability** provided by the **aluminium** wire frame and the **anatomical form** of the tibia shell, which stops the brace from twisting on the leg
- **Comfortable** thanks to its **self-adjusting plastic** extremities and foam padding

2 models: right and left

	S	9 - 10 cm
	M	10 - 11,5 cm
	L	11,5 - 13 cm
	XL	13 - 14 cm

Bending limitation kit

Single size



U03002



U03102



Rebel® Standard U03002

- **Held in place** by the **TM5+ articulation** reproducing the natural movement of the knee and the **suspension strap** (US patent / Thuasne innovation)
- **Stability** provided by the **aluminium** wire frame and the **anatomical form** of the tibia shell, which stops the brace from twisting on the leg

Rebel® Pro U03102

- Greater rigidity than the Standard version
- Compression/Suspension pack

2 models: right and left

	XS	8 - 9 cm
	S	9 - 10 cm
	M	10 - 11,5 cm
	L	11,5 - 13 cm
	XL	13 - 14 cm

XXL 14 - 15 cm*

* Only Rebel Pro



Rebel® Lock U30202

- **Articulation can be fixed** in **extension** by simple pressure: for patients suffering from serious laxity or quadriceps muscle insufficiency
- Stability provided by the **aluminium** wire frame and the **anatomical form** of the tibia shell, which stops the brace from twisting on the leg

2 models: right and left

	XS	8 - 9 cm
	S	9 - 10 cm
	M	10 - 11,5 cm
	L	11,5 - 13 cm

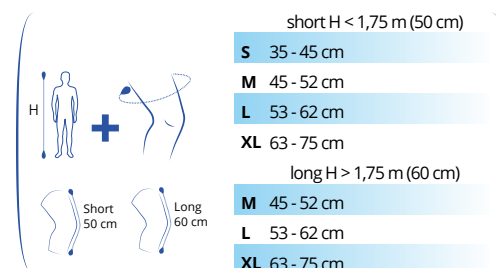
XL 13 - 14 cm

KNEE SPLINTS



Genuimmo® 0° 2415 01 and 20° 2425 01

- **Immobilisation** provided by 3 conformable stays
 - **Anatomical fit** thanks to 4 separate height-adjustable straps
 - **Comfortable** with its wide openings and folding central panel
 - **Easy to use:** fitting guidance. Easy access to the knee for treatments
- 2 versions (0 and 20°)**



Knee splints



Ligaflex® Immo 2400 03

- **Immobilisation** provided by 4 adjustable stays
- **Anti-slip system** and **tightening straps** for better brace support of the leg
- **Adjusts to all leg and thigh circumferences** with its 3 mobile panels



Ligaflex® Immo 0° 2410 03 and 20° 2420 03

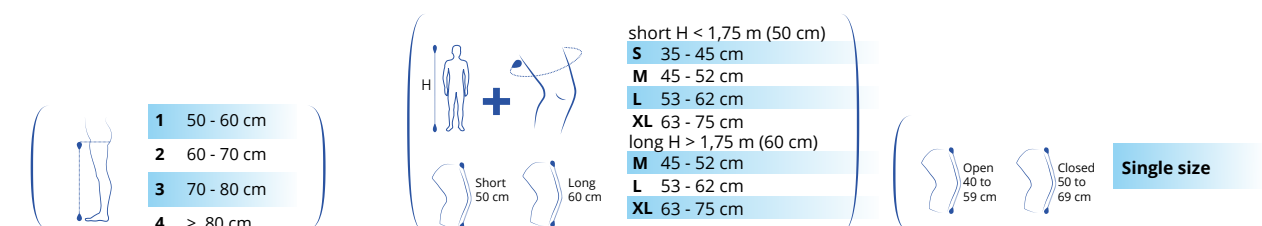
- **Immobilisation** provided by 3 adjustable stays
 - **Anti-slip system** and **tightening straps** for better brace support of the leg
- 2 versions (0 and 20°)**
Exists in a junior version

Hinged knee splints



Ligaflex® Post-op 2384 01

- **Immobilisation** provided by 2 adjustable lateral reinforcements
 - **Adjustable height** for correct support
 - **Flexion adjustable from 0 to 120°** and **extension from 0 to 75°**
- 2 versions (open and closed)**

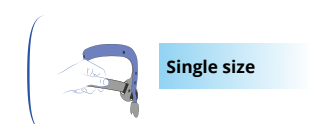


Hinged knee splints



ROM Suspension solution U04804

- **Immobilisation** provided by 2 adjustable lateral reinforcements
- **SnapLock tool-less height adjustment system**
- Tool-less adjustment of **articulation flexion and extension, by 10° graduations**
- **Extra comfort** thanks to its breathable foam inserts
- **Easy to put on** using the **clip buckles**



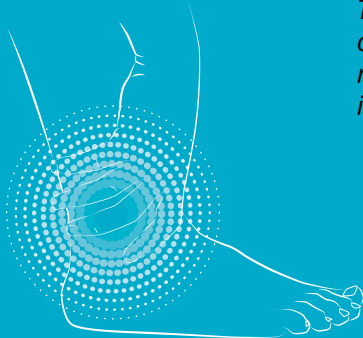
ROM-R U04601

- Immobilisation provided by **2 conformable lateral frames**
- Adjustable height thanks to the **no-tool SnapLock system**
- No-tool adjustment of articulation for bending and stretching, with 15° steps
- **DropLock** system enabling effortless immobilisation at 0, 15, 30 and 45°
- Air-foam inserts adjustable to the morphology





ANKLE



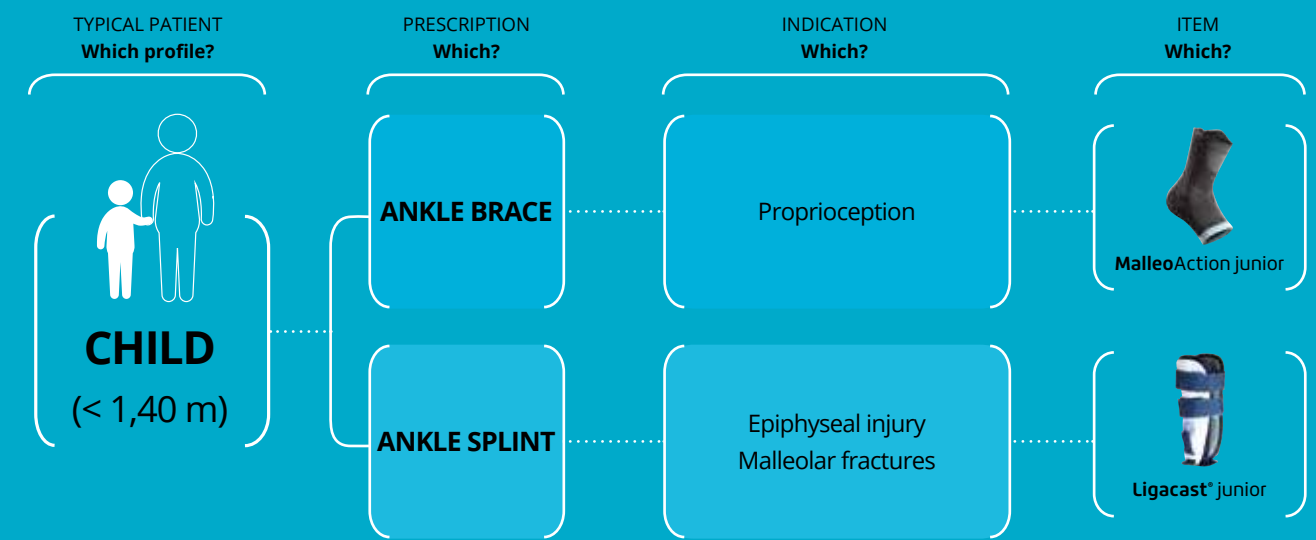
The only physiological movement of the ankle joint is flexion/extension of the foot relative to the leg. However, while walking, there may be lateral movements of the ankle, which can cause ligament damage (sprains) or bone injuries (malleolar fractures).

WHICH SOLUTION FOR WHICH PATHOLOGY?



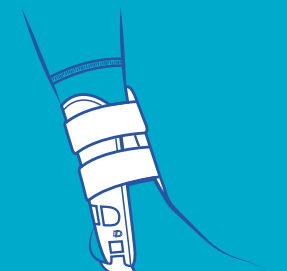

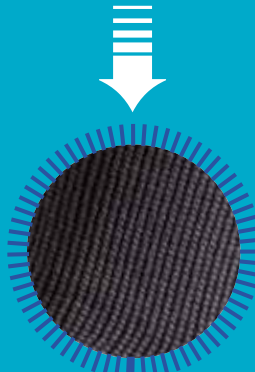
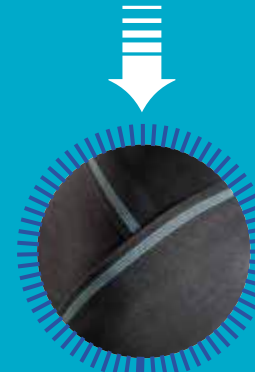
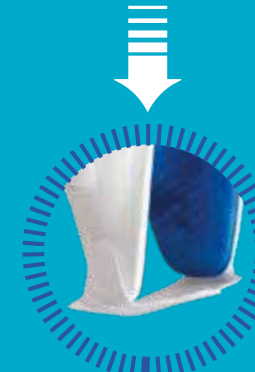

	LIGAMENT AND TENDON RELATED TRAUMA / INJURY				FRACTURES AND POST-OPERATIVE PHASES				PREVENTIVE TREATMENT AND RETURN TO WORK				
	Mild sprain	Moderate sprain	Severe sprain	Achilles tendon disorders	Fracture of the foot and the front of the foot	Malleolar fractures	Fractures of the lower third of the leg	Pre or post-operative ankle stabilisation	Proprioception	Chronic laxity	Resumption of activity	Resumption of sporting activity	Protection of malleoli
PROPRIOCEPTIVE ANKLE BRACES													
MalleoSoft													
MalleoAction													
Silistab® Malleo													
Silistab® Achillo													
MalleoPro activ													
LIGAMENT ANKLE BRACE													
Ligastrap® Malleo													
ANKLE SPLINTS													
MalleoDynastab® Boa®													
MalleoDynastab®													
Ligastrap® Immo													
Ligacast® Air +													
Ligacast® Anatomic													
WALKING BOOTS													
XLR8 long													
XLR8 short													
TD Fix Walker long													
TD Fix Walker short													
TD Air Walker long													
TD Air Walker short													
TD ROM Walker long													
TD ROM Walker short													

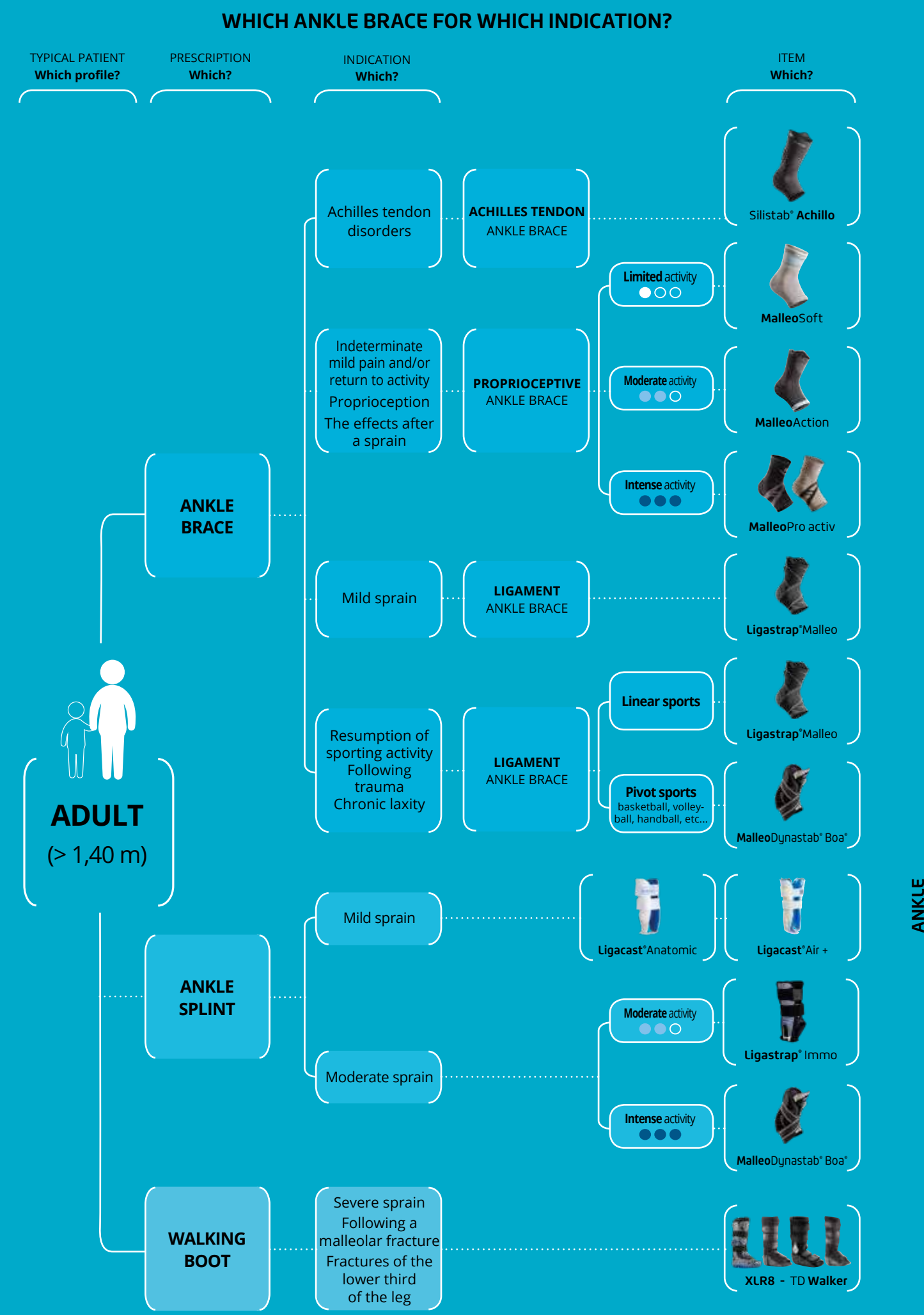
Boa® is a registered trademark of Boa Technology Inc.

ANKLE



ACTION PRINCIPLE
OF ANKLE BRACES, ANKLE SPLINTS
AND WALKING BOOTS

PROPRIOCEPTIVE ANKLE BRACE	LIGAMENT ANKLE BRACE	ANKLE SPLINT	WALKING BOOT
			
<ul style="list-style-type: none">> Improved proprioception (perception of the body in space) via the use of a compressive knit.> Used in the event of mild joint pain or resumption of activities.	<ul style="list-style-type: none">> Holds the ankle in an anatomical position using elastic straps.> Used in the phase immediately following injury (depending on the severity), or in the resumption of sports phase.	<ul style="list-style-type: none">> Analgesic and protection action through a more firm immobilisation of the ankle. Its compressive effect can help reduce oedema.> Used immediately after an injury or postoperatively.	<ul style="list-style-type: none">> Analgesic action through immobilisation of the ankle, reduction of the oedema thanks to adjustable compression, also suitable for managing post-operative treatment.> Used in severe sprains or postoperatively.
			



PROPRIOCEPTIVE ANKLE BRACES



MalleoSoft

3600 02

- **Proprioception** provided by the elastic compressive weave (about 17 mmHg)
- **Anatomically-shaped weave** with comfort zone around the malleoli



MalleoAction

2361 02

- **Support and proprioception** provided by the elastic compressive knit (approximately 22.5 mmHg)
- **Anatomically-shaped knit**, comfort zone over the malleoli and patented pull tabs

Exists in a junior version



Silistab® Malleo

2365 01

- **Silicon insert** to protect the malleoli and **support the instep**
- **Proprioception** thanks to its elastic compressive weave (about 21 mmHg)
- **Anatomically shaped weave**



Silistab® Achillo

2355 02

- **Offloading of the Achilles tendon** provided by **soft silicone heel pieces**: 2 pairs of stackable heel pieces permitting 3 offloading heights depending on the course of the condition (13, 8 or 5 mm)
- **Tendon protection** thanks to the anatomical shape of the peri-Achilles silicone insert
- **Anatomically-shaped knit**, comfort zone over the malleoli and patented pull tabs
- **Massage effect** thanks to the dimpling on the silicone insert
- Elastic compressive knit (approximately 23 mmHg)



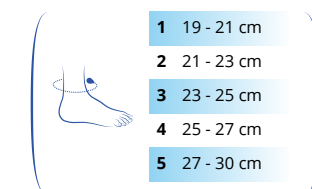
13 mm
height



8 mm
height

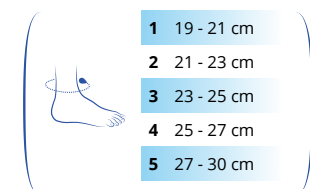


5 mm
height

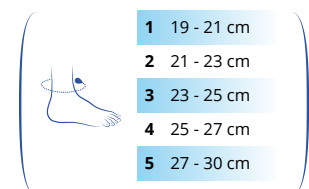


- 1 19 - 21 cm
- 2 21 - 23 cm
- 3 23 - 25 cm
- 4 25 - 27 cm
- 5 27 - 30 cm

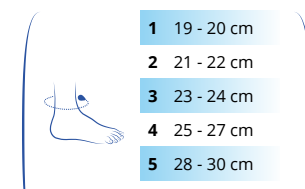
Find out more



- 1 19 - 21 cm
- 2 21 - 23 cm
- 3 23 - 25 cm
- 4 25 - 27 cm
- 5 27 - 30 cm



- 1 19 - 21 cm
- 2 21 - 23 cm
- 3 23 - 25 cm
- 4 25 - 27 cm
- 5 27 - 30 cm



- 1 19 - 20 cm
- 2 21 - 22 cm
- 3 23 - 24 cm
- 4 25 - 27 cm
- 5 28 - 30 cm
- 6 31 - 33 cm



ANKLE

PROPRIOCEPTIVE AND LIGAMENT ANKLE BRACES

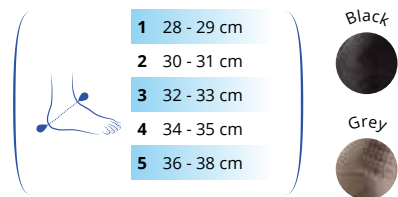


MalleoPro activ

2368 02

- **Support and proprioception** provided by its elastic compression weave (about 27 mmHg) and **integrated supination brake**
- **Anatomically shaped weave**, silicon comfort zone and inserts to protect the malleoli

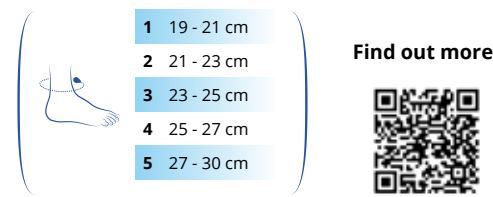
2 models: right and left



Ligastrap® Malleo

2180 03

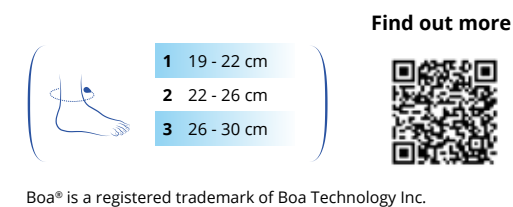
- **Reinforcement of the lateral ligaments** thanks to the elastic compressive knit (approximately 27.5 mmHg) and **double strapping**
- **Additional reinforcement** and placing in slight eversion position thanks to a **removable strap**
- Wearer comfort: minimum thickness and velcro adjustment
- Anti-slip system on the calf for better hold



MalleoDynastab® Boa®

2351 01

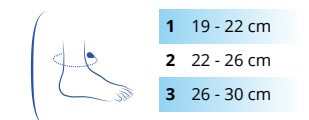
- **Tightening system** with the **Boa® technology**: easy, quick and reliable. Guaranteed throughout the product's life cycle
- **Thin and anatomical design**: can be worn in most shoes
- **Rigid hold in place and increased stabilization** of the ankle thanks to the light and comfortable metal reinforcements
- **Additional lateral reinforcement** provided by the 2 straps
- **Easy hold in place and removal** thanks to a large aperture
- **3D antibacterial knit**, light and wicking for better moisture evacuation



MalleoDynastab®

2350 03

- **Precise lace-up tightening**



ANKLE

ANKLE SPLINTS



Splint with reinforcing strap

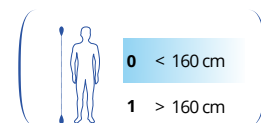


Ligastrap® Immo

2337 02

- **Firm support** for the ankle provided by 2 rigid side shells and the dual-strap fastening system
- **Additional support** provided by **removable strapping strap**
- **Inner lining made of thermoregulating Outlast® fabric** for long-term comfort
- **Fits the patient's anatomy:** side supports with asymmetrical hollows for the malleoli
- **Simplified fastening** using the pulley system and velcro straps for precise adjustment and uniform tightening of the brace

2 models: right and left



Splint with inflatable inserts



Ligacast® Air +

2334 01

- **Firm support** for the ankle provided by 2 rigid side shells
- Protection reinforced by the **inflatable inserts** for a perfect anatomical fit
- The air circulating inside the pads provides a massage effect to help reduce oedema
- **Easy to fit** thanks to the velcro straps and adjustable heel strap
- **Separate inflator bulb** for adjustment of air pressure once the brace is in place

Bilateral model



Splint with honeycomb inserts



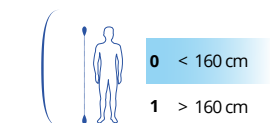
Ligacast® Anatomic

2315 01

- **Firm support** for the ankle provided by 2 rigid side shells
- Flexible edges for an anatomical fit
- **Honeycomb interior** for enhanced wearer comfort
- **Fits the patient's anatomy:** side supports with asymmetrical hollows for the malleoli

2 models: right and left

Exists in a junior version



WALKING BOOTS




XLR8

U08903 (long) - U09003 (short)

- **Rigorous immobilisation** thanks to the rigid lateral shell case
- **Precise anatomical fit** thanks to two independent air cells, integrated in the boot
- Removable rigid shell case allowing **full opening of the slipper**
- **Removable and washable inside slipper**
- **Easy and quick inflating** to adapt the edema pressure one the walking boot is in place
- **Anti-slip curved sole** for a natural and comfortable gait
- Toe protection thanks to an **adjustable arch** (3 positions)

2 versions: long and short

	XS < 35
	S 35 - 38
	M 39 - 43
	L 44 - 47
	XL > 47

Find out more



Walking boots




TD Fix Walker

U08002 (long) - U08102 (short)

- **Firm support** provided by the **anatomically-shaped metal lateral reinforcements**
- **Wide curved sole** for maximum stability
- **Comfortable upper section** for better morphological adjustment
- **Ultra-light product** for a high level of day-to-day wearer comfort
- Removable and washable inner bootee
- Adjustable Velcro fastening straps

2 versions: long and short

	XS < 35
	S 35 - 38
	M 39 - 43
	L 44 - 47
	XL > 47

Find out more




TD ROM Walker

U08202 (long) - U08302 (short)

- **Range of motion adjustment possible** from 45° plantar flexion to 30° dorsal flexion in 7.5° stages
- **Firm support** provided by the **anatomically-shaped metal lateral reinforcements**
- **Ultra-light product** for a high level of wearer comfort day-to-day

2 versions: long and short

	XS < 35
	S 35 - 38
	M 39 - 43
	L 44 - 47
	XL > 47

Find out more




TD Air Walker

U08402 (long) - U08502 (short)

- Adjustment to fit anatomy thanks to the **inflatable bootee with integrated pump**
- **Easy, quick inflation** to adjust the pressure to the level of oedema once the walker boot is in place
- **Firm support** provided by the **anatomically-shaped metal lateral reinforcements**
- **Ultra-light product** for a high level of wearer comfort day-to-day

2 versions: long and short

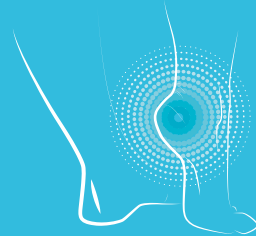
	XS < 35
	S 35 - 38
	M 39 - 43
	L 44 - 47
	XL > 47

Find out more





FOOT



The foot is essential for the human body to stand upright. It also plays a shock absorption role and serves to propel the foot forwards when walking. Feet can be subject to anatomical, tissue and articulation deformations.

WHICH SOLUTION FOR WHICH PATHOLOGY?

INSOLES AND HEEL INSERTS

	Articulation shock absorption	Metatarsalgia	Bursitis	Plantar fasciitis	Heel spurs	Osteoarthritis
INSOLES						
Pedipro						
Pedipro plus						
Podosil						
HEEL INSERTS						
Pedipro						
Pedipro plus						
Pedipro softer						
Elastocalx N, S/P						
ElastocalxPlus, Flex						
Sohli						

OTHER FOOT SPLINTS

	Foot levator muscle weakness	Maintenance and post-operative hallux-valgus therapy
NEW SpryStep		
Pero-med		
Pero-med AFO III/II		
Pero-med Adapt		
HalluxPro night		

OFFLOADING SHOES

	Heel unloading in cases of:		Front-foot unloading in cases of:		
	Plantar ulcer	Post-operative	Plantar ulcer	Post-operative	Lesions and fractures
PODO-MED					
T500501					
T500301					
T500451 / T500471					

INSOLES AND HEEL INSERTS



Pedipro

6510 01 - 6500 01

- **Flexible silicon** providing shock absorption and distribution
- Extra comfort thanks to **ventilation channels** which provide better aeration
- Reinforced heel support in the shoe through **non-slip pads**
- Sold in pairs
- Under-heel thickness: 8 mm



Podosil

T478801

- Silicon visco-elastic insoles with **hypo-allergenic coating**
- **Support to feet and unloading of the sensitive areas** of the front-foot and heel
- Additional unloading of the heel spur thanks to a dedicated concave zone
- Extra comfort from the **cotton lining**, that is easily tolerated by the skin
- Sold in pairs

ORDER IN GERMANY



Pedipro softer

6605 01

- **Flexible silicon** providing shock absorption and distribution
- **Progressive heel inserts** with **concave areas for suitable inserts**: aniseed green insert for heel spur comfort, blue insert for healthy feet or other conditions
- Extra comfort thanks to **ventilation channels** which provide better aeration
- **High sides** for better fit inside shoe
- Sold in pairs
- Under-heel thickness: 10 mm



Pedipro plus

6610 01 - 6600 01

- **Flexible silicon** providing shock absorption and distribution
- **Comfort zones** provided by **anatomically shaped inserts** around the heel and the metatarsus (insole version) and around the heel spur (heel insert version)
- **Antibacterial coating** (Cambrelle/ Amicor™) for hygiene and comfort
- Reinforced heel support in the shoe through **non-slip pads**
- Sold in pairs
- Under-heel thickness: 8 mm

INSOLES	
1	37 - 39
2	40 - 41
3	42 - 43
4	44 - 46
HEEL INSERTS	
1	36 - 39
2	40 - 46

Shoe size	Length
EUR	cm
35 - 36	22,3 - 23
37 - 38	23,7 - 24,3
39 - 40	25 - 25,7
41 - 42	26,3 - 27
43 - 44	27,7 - 28,3
45 - 46	29 - 29,7
47 - 48	30,3 - 31

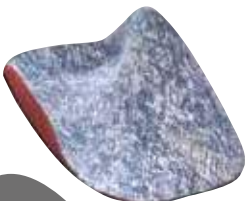
Shoe size	Length
EUR	cm
36 - 39	22,3 - 23
40 - 46	23,7 - 24,3

INSOLES	
1	37 - 39
2	40 - 41
3	42 - 43
4	44 - 46
HEEL INSERTS	
1	36 - 39
2	40 - 46

Arch support for children

Sohli

T479841



- Increased comfort with **textile covering** on the foot side
- **Median calcaneus correction**
- Thin sides with no compression points
- Sold in pairs

ORDER IN GERMANY

Shoe size	Length
EUR	cm
19 - 20	10,7 - 11,3
21 - 22	12 - 12,7
23 - 24	13,3 - 14
25 - 26	14,7 - 15,3
27 - 28	16 - 16,7
28 - 30	17,3 - 18
31 - 32	18,7 - 19,3
33 - 34	20 - 20,7
35 - 36	21,3 - 22
37 - 38	22,7 - 23,3



HEEL INSERTS

Heel inserts

ORDER IN GERMANY



Elastocalx N

T479801

- **Symmetrical**, flat ended without sides
- Adapts to fit all shoes
- Composition: silicon

Single right/left model

ORDER IN GERMANY




Elastocalx S/P


T479811

- **Unilateral supination or pronation raising heel insert**
- Adapts to fit all shoes
- Composition: silicon

Single right/left model

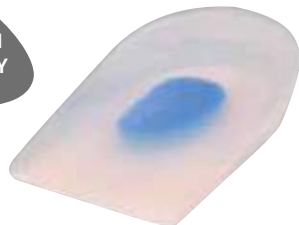


	Shoe size	Length
	EUR	cm
0 XS	32 - 34	20,3 - 21,7
1 S	35 - 37	22,3 - 23,7
2 M	38 - 40	24,3 - 25,7
3 L	41 - 43	26,3 - 27,7
4 XL	44 - 46	27,3 - 30,7



	Shoe size	Length
	EUR	cm
0 XS	32 - 34	20,3 - 21,7
1 S	35 - 37	22,3 - 23,7
2 M	38 - 40	24,3 - 25,7
3 L	41 - 43	26,3 - 27,7
4 XL	44 - 46	28,3 - 29,7

ORDER IN GERMANY



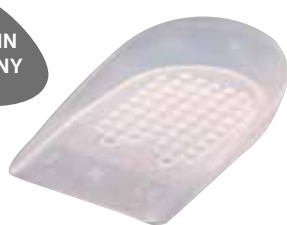
ElastocalxPlus

T479821

- **Soft zone at the heel spur**
- Composition: silicon

Single right/left model

ORDER IN GERMANY




ElastocalxFlex


T479911

- **Honeycomb structure around the heel**
- Adapts to fit all shoes
- Composition: silicon

Single right/left model



	Shoe size	Length
	EUR	cm
0 XS	32 - 34	20,3 - 21,7
1 S	35 - 37	22,3 - 23,7
2 M	38 - 40	24,3 - 25,7
3 L	41 - 43	26,3 - 27,7
4 XL	44 - 46	28,3 - 29,7



	Shoe size	Length
	EUR	cm
0 XS	32 - 34	20,3 - 21,7
1 S	35 - 37	22,3 - 23,7
2 M	38 - 40	24,3 - 25,7
3 L	41 - 43	26,3 - 27,7
4 XL	44 - 46	28,3 - 29,7


OFFLOADING SHOES

ORDER IN GERMANY



Podo-med T500501

- **Integrated plantar sole**, adjustable by moulding
- **Seamless interior** avoiding pressure zones
- **Fitting and treatment made easy** by its complete opening and Velcro strap adjustment




	Shoe size	Foot length
S	35 - 37	22 - 23 cm
M	38 - 40	24 - 25 cm
L	41 - 43	26 - 27 cm
XL	44 - 46	28 - 29 cm

ORDER IN GERMANY



Podo-med T500301

- Wedge shaped base with **dorsal flexion at 10°**
- **Rounded heel** for safe comfortable walking
- **Seamless interior** avoiding pressure zones




	Shoe size	Foot length
S	35 - 37	22 - 23 cm
M	38 - 40	24 - 25 cm
L	41 - 43	26 - 27 cm
XL	44 - 46	28 - 29 cm

ORDER IN GERMANY



Podo-med T500451

- Wedge shaped base with **dorsal flexion at 10°**
- **Extended sole** to protect the foot
- **Rounded heel** for safe comfortable walking
- **Seamless interior** avoiding pressure zones




	Shoe size	Foot length
XS	32 - 34	20 - 21 cm
S	35 - 37	22 - 23 cm
M	38 - 40	24 - 25 cm
L	41 - 43	26 - 27 cm
XL	44 - 46	28 - 29 cm

ORDER IN GERMANY



Podo-med T500471

- Wedge shaped base with **dorsal flexion at 10°**
- **Extended sole** and **end of foot fitting** with Velcro strap
- **Rounded heel** for safe comfortable walking
- **Seamless interior** avoiding pressure zones



	Shoe size	Foot length
XS	32 - 34	20 - 21 cm
S	35 - 37	22 - 23 cm
M	38 - 40	24 - 25 cm
L	41 - 43	26 - 27 cm
XL	44 - 46	28 - 29 cm

ANKLE & FOOT ORTHOSES



Pero-med

T479722

- **Short brace**, extends above the malleoli
- Its design allows it to be discreetly inserted into the shoe

Models: right - left

1	31 - 32
2	33 - 34
3	35 - 37
4	38 - 40
5	41 - 43
6	44 - 46
7	47 - 49



Pero-med Adapt

T479601

- Effective **right-angle** foot support to secure the walking motion
- Extra comfort provided by the sliding **strap**, avoiding irritation
- Morphological fit due to the **thermomouldable plastic**
- Its design allows it to be discreetly inserted into the shoe

Models: right - left

S	35 - 37
M	37 - 39
L	39 - 41
XL	41 - 44



Pero-med AFO III/II

T479652

- **Effective right-angle** foot support to secure the walking motion
- Extra comfort thanks to its **anatomical shape** and **light weight**
- Its design allows it to be worn with all types of flat shoe

Models: right - left

S	35 - 37
M	37 - 39
L	39 - 41
XL	41 - 44

Night orthosis for Hallux Valgus



HalluxPro night

T479302

- Extra comfort thanks to its **light weight and anatomical shape**
- Simple to use thanks to the **Velcro fastening** which allows for a better morphological adjustment
- For night-time use, not recommended for walking

Models: right - left

	Shoe size	Length (cm)
S	< 38	< 24,3
M	38 - 41	24,3 - 26,3
L	> 41	> 26,3



NEW

SpryStep

U01701

Dynamic Ankle Foot Orthosis for foot drop of neurological, traumatic or muscular origin

Features and benefits:

- A mix of composite materials which allows to the patient, a **natural walking support**
- Posterior lateral strut with an helicoidal shape which skirts malleolus in the **anatomy respect** and brings additional comfort
- Adjustable footplate and straps to fit to the patient morphology
- Adjustable footplate and straps: 5 references which cover all the patient needs: optimised stock
- **No specific tooling required**

2 models: right and left


	Length	Shoe size
XS	30 cm	33 - 37
S	32 cm	36 - 39
M	34 cm	38 - 42
L	36 cm	41 - 44
XL	38 cm	44 - 47

Find out more





JUNIOR RANGE

	PRESCRIPTION Which?	INDICATION Which?	JUNIOR PRODUCT Which?
 TORSO AND UPPER LIMBS	CERVICAL COLLAR	Cervical spine pain	 Ortel C1 junior
	CLAVICULAR STRAPS	Clavicle fracture	 Ligaflex® junior
	WRIST/THUMB SPLINT	Epiphyseal and tendon injuries of the wrist or thumb Fracture of the scaphoid	 Manurhizo junior
	WRIST BRACE	Epiphyseal injury of the wrist Wrist tendinitis	 ManuImmo® junior
 LOWER LIMB	KNEE BRACE	Proprioception	 GenuAction junior
	KNEE SPLINT	Epiphyseal injury Knee immobilisation at 0°	 Ligaflex® Immo 0° junior
	ANKLE BRACE	Proprioception	 MalleoAction junior
	ANKLE SPLINT	Epiphyseal injury Malleolar fractures	 Ligacast® junior

JUNIOR RANGE

UPPER LIMB

Neck

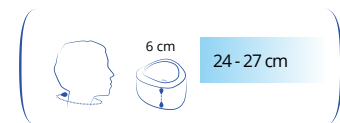


Ortel C1 junior

2620 001 004

Soft cervical collar

- **Removable rigid insert** for adjustable support
- **Precise velcro adjustment**



Shoulder

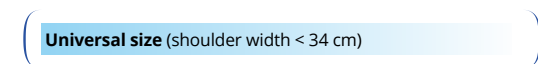


Ligaflex® junior clavicular straps

26400229900499

Clavicular immobilisation straps

- **Secure immobilisation** thanks to a **cutting system for adjustment** to the child's size (shoulder width less than 34 cm)
- **Dorsal foam anchoring pad** for optimum comfort
- Velcro fitting system and buckle fastening



Wrist - Thumb



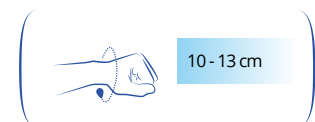
Manurhizo junior

2630 02

Wrist and thumb immobilisation splint

- **Firm support for the thumb and wrist** thanks to the **2 conformable and anatomical stays** (palm and thumb column)
- Comfortable with its **foam-lined inner fabric**
- **4 velcro tightening straps** for easy fitting and removal

2 models: right and left



Wrist



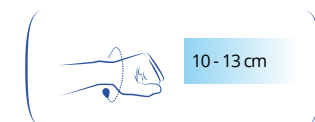
Manulmmo® junior

2635 02

Wrist immobilisation splint

- **Firm wrist support** thanks to the conformable and **anatomically-shaped palm stay**
- **4 velcro tightening straps** for easy fitting and removal

2 models: right and left



LOWER LIMB

Knee

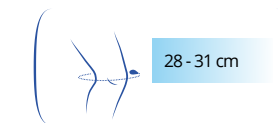


GenuAction junior

2615 01

Elastic compressive knee support

- **Support and proprioception** provided by the elastic compressive knit (approximately 23 mmHg)
- **Anatomically-shaped knit** with comfort zones over the kneecap and behind the knee

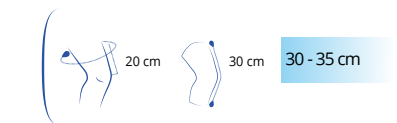


Ligaflex® Immo 0° junior

2610 001 004

Knee immobilisation splint at 0°

- **Immobilisation** provided by 4 radio-transparent conformable stays
- Velcro tightening straps for better support



Ankle



MalleoAction junior

2625 01

Elastic compressive ankle support

- **Support and proprioception** provided by the elastic compressive knit (approximately 22.5 mmHg)
- **Anatomically-shaped knit**, comfort zone over the malleoli and patented pull tabs

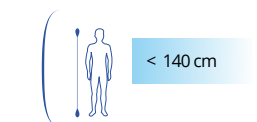


Ligacast® junior

2600 001 004

Stabilising ankle brace with foam inserts

- **Firm support** for the ankle thanks to 2 rigid side shells
- **Adjustment to fit the child's anatomy**: height-adjustable heel strap, precise velcro adjustment of straps
- Comfortable thanks to the **foam inserts**



FIRST AID

Aluform

- **Adjustable immobilisation** of the fractured limb provided by the combination of an adjustable aluminium frame and polyethylene supports
- Thick foam padding for comfort
- Easy to fit thanks to the Velcro strap fastening system
- Easy to clean (washable foam covers)

		Thuasne ref.
Aluform adjustable splint	Leg	7400
	Fore-arm	7401
	Elbow	7402
	Child's leg	7404
Aluform bag		7407



Aluform leg
7400

Aluform elbow
7402

Other products



C.H.U.T. Hæmostatic cushion
5004



Isothermal blanket
7551

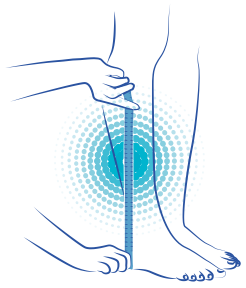


Instant ice pack
7281

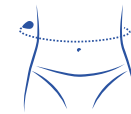


Triangular bandage
7545

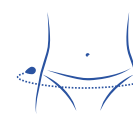
MEASUREMENTS



BACK



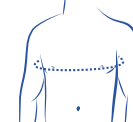
Measure the waist at the level of the navel



Measure the hip circumference



Measure the distance between the top of the hips and the solar plexus



Measure the circumference of the bust passing under the armpits at the widest point

SHOULDER



Measure the length between the fold of the elbow and the base of the fingers

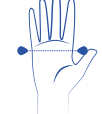


Measure the arm circumference at the level of the biceps

WRIST



Measure the circumference of the wrist



Measure the width of the hand at the level of the metacarpals



Measure the circumference of the finger at the base of the nail

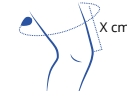


Measure the width of the thumb at the level of the second phalanx

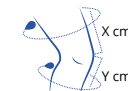
KNEE



Measure the circumference of the knee in the middle of the patella, knee slightly bent



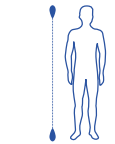
Measure the circumference of the thigh at the widest or at X cm above the knee



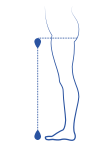
Measure the circumference of the thigh at X cm above the knee and the width of the calf Y cm below the knee



Measure the width of the knee



Measure the height



Measure the floor-to-crotch height

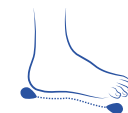
ANKLE



Measure the circumference of the ankle above the malleolus



Measure the circumference of the instep



Measure the shoe size



THUASNE

WINGS
FOR YOUR HEALTH

THUASNE

120, rue Marius AUFAN – CS 10032 – 92309 Levallois-Perret Cedex – France

Tel. + 33 1 41 05 92 92 – Fax + 33 1 41 05 89 91

Email : sales.export@thuasne.fr



www.thuasne.com

Ref. 0116 092 028 - 15 (Déc. 2017)

We reserve the right to modify our products as shown and described in this catalogue, without previous notice. Non-contractual photographs.

Please check the availability of products according to the countries.

